



**National Gallery of Art**

---

**CALENDAR OF EVENTS**

*December 1985*

# DECEMBER

**Monday, November 25 through Sunday, December 1**

**Monday, December 2 through Sunday, December 8**

**Monday, December 9 through Sunday, December 15**

**Monday, December 16 through Sunday, December 22**

**Monday, December 23 through Sunday, December 29**

## COLLECTION HIGHLIGHTS

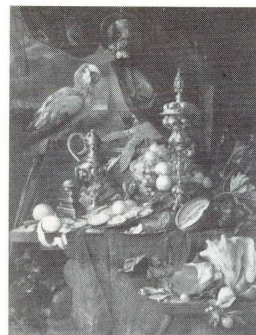
Brief gallery talks on individual works of art. Reproductions of the object discussed may be purchased in the Gallery's sales shops; a brief text is also available without charge.

Tuesday through Saturday 12:00 p.m.  
Sunday 2:00 p.m.

Collection Highlights will not be given on Thanksgiving Day, November 28.

November 26-December 1

Jan Davidsz. de Heem  
*Still Life with Parrots*  
(On Loan from the John and Mabel Ringling Museum of Art)  
West Building, Gallery 45



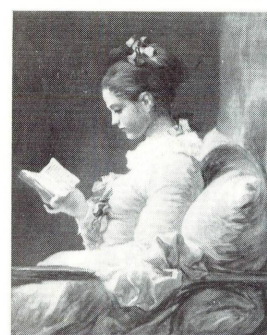
December 3-December 8

Ellsworth Kelly  
*White Curve VIII*  
(Gift of Mr. and Mrs. Joseph Helman)  
East Building  
Concourse Level



December 10-December 15

Jean-Honoré Fragonard  
*Young Girl Reading*  
(Gift of Mrs. Mellon)  
Bruce in memory of her father, Andrew W. Mellon)  
West Building, Gallery 55



December 17-December 22

Eugène Delacroix  
*Columbus and His Son at La Rábida*  
(Chester Dale Collection)  
West Building, Gallery 93



December 24-December 29

Raphael, *The Niccolini-Cowper Madonna*  
(Andrew W. Mellon Collection)  
West Building, Gallery 8

The Gallery is closed on December 25



## SPECIAL TOURS

Fifty-minute tours with specific themes.

Tuesday through Saturday 1:00 p.m.  
Sunday 5:30 p.m.

No tour on Thanksgiving Day, November 28.

November 26-December 1

*Modern Masters: American Art of the Twentieth Century*  
East Building  
Ground Floor Lobby

December 3-December 8

*Continental Painters Working in Britain*  
West Building, Rotunda

December 10-December 15

*Dürer to Delacroix: Great Master Drawings from Stockholm*  
West Building, Rotunda

December 17-December 22

*Survey of Landscape Painting in the Collection of the National Gallery*  
West Building, Rotunda

December 24-December 29

*General Introductory Tours Only: See other side for times and locations*

The Gallery is closed on December 25

## FILMS

Free films on art and feature films related to special exhibitions. Unreserved seats are available on a first-come, first-served basis.

East Building Auditorium



Dennis Price and Valerie Hobson in *Kind Hearts and Coronets*, 1949, to be shown December 13, 14, and 15 (Museum of Modern Art/Film Stills Archive)

November 26-December 1

*Knole, Kent* (26 min.) and *The English Garden*, part 2 (26 min.)  
Wed., Fri., Sat. 12:30

*Royal Heritage*, part 4 (60 min.)  
Tues., Wed. 2:00

*Spirit of the Age*, part 4 (50 min.)  
Tues., Wed. 3:30

*Barry Lyndon* (by Stanley Kubrick, 1975, 183 min.)  
Fri. and Sat. 2:30  
Sun. 6:00

December 3-December 8

*Stourhead, Wiltshire* (26 min.) and *The English Garden*, part 3 (26 min.)  
Wed. through Sat. 12:30  
Sun. 1:00

*Royal Heritage*, part 5 (60 min.); Tues. through Thurs. 2:00

*Spirit of the Age*, part 5 (50 min.)  
Wed. and Thurs. 3:30

*The Ghost Goes West* (by René Clair, 1936, 78 min.) and *Little Lord Fauntleroy* (by John Cromwell, 1936, 98 min.); Fri. 2:00; Sat. 2:30; Sun. 6:00

December 10-December 15

*Lake in the Landscape and A Picturesque Paradise* (parts 4 and 5 from *The English Garden*, 52 min.); Wed. through Sat. 12:30; Sun. 1:00

*Royal Heritage*, part 6 (60 min.); Tues. through Thurs. 2:00

*Spirit of the Age*, part 6 (50 min.)  
Tues. through Thurs. 3:30

*Kind Hearts and Coronets* (by Robert Hamer, 1949, 104 min.)  
Fri. and Sat. 2:30  
Sun. 6:00

December 17-December 22

*Perfectly Dazzling and Technicolor and Technology* (parts 6 and 7 from *The English Garden*, 52 min.)  
Wed. through Sat. 12:30  
Sun. 1:00

*Royal Heritage*, part 7 (60 min.); Tues. through Thurs. 2:00

*Spirit of the Age*, part 7 (50 min.)  
Tues. through Thurs. 3:30

*The Cat and the Canary* (by Radley Metzger, 1979, 90 min.) and *The Amazing Mr. Blunden* (by Lionel Jeffries, 1972, 95 min.)  
Fri. and Sat. 2:30  
Sun. 6:00

December 26-December 29

*John James Audubon and the Birds of America* (28 min.); Thurs. through Sat. 12:30  
Sun. 1:00

*Tom Jones* (by Tony Richardson, 1963, 129 min.)  
Fri. and Sat. 2:30  
Sun. 6:00

## SUNDAY LECTURES

Free lectures by distinguished visiting scholars. No registration needed but seating is limited.

Sunday 4:00 p.m.  
East Building Auditorium

December 1

*The Sociology of the English Country House*

Lawrence Stone  
Department of History  
Princeton University  
Princeton

December 8

*The Palladian Country House in England*

Lord John Julius Norwich  
Writer and Documentarist of Historic Houses  
London

December 15

*The English as Collectors of French Furniture*

Sir Francis Watson  
Historian of Decorative Arts  
London

December 22

*Portraits and Propaganda*

Jill Finsten  
Erindale College  
University of Toronto  
Ontario

December 29

*Hardwick Hall: Monument to a Feminine Patron of the Arts*

Mary E. Hazard  
Associate Professor of English  
Drexel University  
Philadelphia

## SUNDAY CONCERTS

*44th Season of the National Gallery Concerts*

Free concerts by the National Gallery Orchestra, recitalists, and ensembles. Unreserved seats available from 6:00 p.m. Concerts are broadcast live on WGMS 570 AM and 103.5 FM, beginning promptly at 7:00 p.m.

Sunday 7:00 p.m.  
West Building, East Garden Court

December 1

The Trio Brasileiro  
Works by Nobre, Prado, and Ravel

December 8

Anne Turner, *Soprano*  
William Jones, *Piano-Harpsichord*

"A Heritage of British Music"  
All English Program in honor of *The Treasure Houses of Britain* exhibition

December 15

Thomas McIntosh, *Piano*  
Music by Mozart, Ravel, Rush, and Schumann

December 22

Camerata of the University of Maryland, Baltimore Campus

Christmas Program including Elizabethan Carols

December 29

National Gallery Orchestra  
Richard Bales, *Conductor*

Traditional "Music of Vienna" Program

### PBS Series: The Treasure Houses of Britain

Mark your calendars in December for the three, one-hour television specials which will be presented over PBS by WETA/26 to coincide with *The Treasure Houses of Britain* exhibition. The series brings viewers into some of Great Britain's most magnificent country houses and offers an unprecedented chance to get to know their owners. The programs have been produced in Britain by Malone Gill Productions in association with the National Gallery of Art. Presentation of the programs is made possible in part by a grant from Ford Motor Company. The series will air in Washington on WETA on the following schedule:

December 16: *Building for Eternity*  
9:00 p.m.  
December 23: *Palaces of Reason  
and Delight*  
10:00 p.m.  
December 30: *Recapturing the Past*  
9:00 p.m.

For other areas, check local listings.

Cassettes of the three programs will be available for sale in December in the Publications sales areas of the National Gallery after the programs have aired.

### Holiday Gift Items

The Gallery Publications Service offers a number of items relating to the collections and exhibitions, including calendars and appointment books, wrapping paper, art books, Christmas cards, and reproductions of works of art. For a free Christmas brochure with order form, write to: Publications Service, National Gallery of Art, Washington, D.C. 20565.

Of special interest are two items relating to *The Treasure Houses of Britain*: the exhibition catalogue available for \$24.95 and *The English Country House: A Grand Tour* by Gervase Jackson-Stops (curator of the exhibition) and James Pipkin; price \$14.95. Many other new books relating to the

### Foreign Language Tours

Regularly scheduled foreign language tours of the West Building are offered on Tuesdays at noon beginning in the West Building Rotunda. The December schedule is as follows:

December 3: *French*  
December 10: *Spanish*  
December 17: *German*

Groups wishing to schedule tours in these or other foreign languages can make an appointment by calling the Education Department at 202/842-6249. Italian, Hebrew, and Japanese are some of the many languages available.

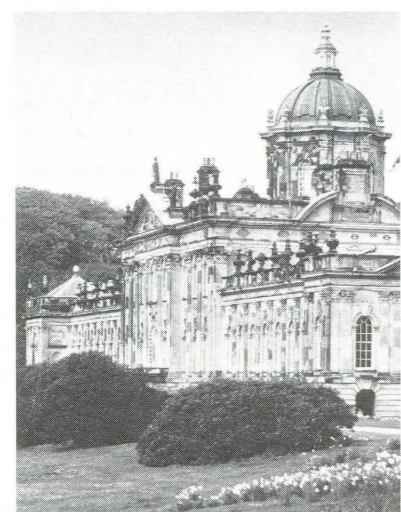
### INTRODUCTORY TOURS

#### Introduction to the East Building Collections

Mon. through Sat. 11:00 a.m.  
Sun. 1:00 p.m.  
East Building, Ground Floor Lobby

### Special Screening of "Brideshead Revisited"

A special free screening of "Brideshead Revisited" will be presented at the Kennedy Center's American Film Institute on Saturday, November 30, and Sunday, December 1. The programs will be shown in two, six-hour sessions beginning at 12 noon each day. Castle Howard, one of the country homes represented in *The Treasure Houses of Britain* exhibition, served as the setting for Brideshead Castle in the film.



Castle Howard, Yorkshire; the south front  
National Gallery of Art/James Pipkin

*Treasure Houses* exhibition are available through the Christmas brochure or at the sales desks in both buildings and the connecting concourse.

Also available in time for Christmas is the catalogue for the major exhibition which opens in January at the National Gallery, *The New Painting: Impressionism 1874-1886*. All of the paintings in the exhibition are illustrated in color in this catalogue; price \$19.95.

To order these publications, send a check or money order in US dollars payable to NGA Publications Service to the address noted above. Please include an additional \$2.00 to cover shipping costs for each order.

### Family Programs

The Education Department will continue the popular new programs for families with children ages six to twelve. The programs are offered free on Saturday mornings and last approximately 1½ hours. They begin in the West Building Auditorium at 10:00 a.m. with a short film followed by a tour. Advance registration is required; call 202/842-6249 for reservations. Children must be accompanied by an adult. All Saturday morning programs in December will feature *The Christmas Story in Art*.

#### Introduction to the West Building Collections

Mon. through Sat. 3:00 p.m.  
Sunday 5:00 p.m.  
West Building, Rotunda



Albrecht Dürer, *Portrait of a Girl*  
Nationalmuseum, Stockholm

### Dürer to Delacroix: Great Master Drawings from Stockholm

Through January 5, 1986  
Ground Floor Galleries  
West Building

One hundred-eighteen master drawings from the Swedish Nationalmuseum, Stockholm—most never before seen in the United States—are on view.

### German Expressionist Prints from the Collection of Ruth and Jacob Kainen

Through February 9, 1986  
Ground Floor  
East Building

Ninety German Expressionist prints from the private collection of Ruth and Jacob Kainen are on view.

### IN THE WEST BUILDING PRINTS AND DRAWINGS GALLERIES

#### Compositional Drawings from the National Gallery's Collection

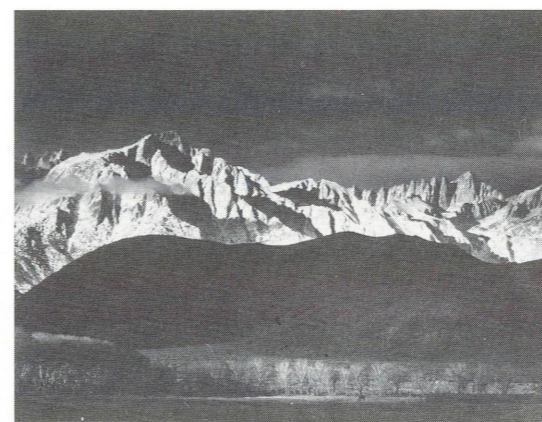
Through February 16, 1986

#### Special Course

**Taste and Treasures:  
An Introduction  
to the British Country House**  
Through December 21, 1985

In the conclusion to this series, three one-hour slide lectures examine the country house phenomenon from a variety of viewpoints, including the history of patronage and collecting and the development of architectural styles. The lectures are offered free on Tuesdays at 12:30 p.m. and repeated on Saturdays at 11:00 a.m. in the East Building Auditorium. No reservations are required, but space is limited.

December 3, 7: *The Age of Robert Adam*  
December 10, 14: *The Regency House and the French Revolution*  
December 17, 21: *The Victorian Country House*



Ansel Adams, *Winter Sunrise, Sierra Nevada, from Lone Pine, California*  
Courtesy of the Trustees of the Ansel Adams Publishing Rights Trust

### Ansel Adams: Classic Images

Through January 12, 1986  
Ground Floor Galleries  
West Building

This exhibition is the first museum showing in America of the full museum set of Ansel Adams' works—seventy-five of the finest images produced by Ansel Adams and selected by him to represent the highest quality of his artistic achievement.



Otto Mueller, *Girl Seated between Large Plants*  
The Ruth and Jacob Kainen Collection

#### Figure Prints from the National Gallery's Collection

Through February 16, 1986

#### Special Lecture/Demonstration

**The Dynamic Country House:  
Clothing and Social Interaction  
in the 18th Century**  
Gretchen Schneider,  
Historian of Dance and Manners  
Sunday, December 1, at 1:30 p.m.  
East Building Auditorium

In conjunction with the exhibition, *The Treasure Houses of Britain*, Dr. Gretchen Schneider will discuss and demonstrate the relationship between dress and deportment in the English country house. Dressed in accurate re-creations of eighteenth-century clothing, Dr. Schneider and an assistant will describe how costume affected the behavior of men and women at this time.

### The Treasure Houses of Britain: Five Hundred Years of Private Patronage and Art Collecting

Through March 16, 1986  
Mezzanine and Upper Levels  
East Building

Over 700 works of art from more than 200 country houses are on view in the largest and most ambitious exhibition ever undertaken by the National Gallery. The installation encompasses painting, sculpture, furniture, tapestries, jewelry, silver, armor, porcelain, and other decorative arts. It is made possible by a generous grant from Ford Motor Company.

The exhibition covers five hundred years of collecting and commissioning of art, beginning with the fifteenth century and concluding in the present day. Included in the exhibition are paintings by artists such as Holbein, Titian, Rembrandt, Poussin, Van Dyck, Velasquez, Canaletto, and Sargent; sculpture by Praxiteles, Canova, and Henry Moore; furniture by Kent and Chippendale; and Meissen, Sèvres, and Chelsea, as well as Oriental, porcelain. The works have been selected by Gervase Jackson-Stops, architectural adviser to the National Trust and curator of the exhibition.

Seventeen rooms, each reflecting the ambiance of a particular period of collecting, have been designed to exhibit the works of art. Moldings, paint colors, and wall coverings are accurate to the period, and design details are often taken from a painting in the exhibition or from a room in a country house. The exhibition has been designed by Gaillard Ravenal and Mark Leithauser of the National Gallery's Design and Installation Department.



Corner Chimneypiece in Room 4,  
*The Triumph of the Baroque*

#### Extended Hours

*The Treasure Houses of Britain* exhibition is open Mondays through Saturdays from 10:00 a.m. to 7:00 p.m. (Hours for the rest of the museum are 10:00 a.m. to 5:00 p.m.) Sunday hours are noon to 9:00 p.m. There is no charge for admission to the National Gallery or to the exhibition. For up-to-date recorded information on the exhibition, call 202/842-6672; for answers to specific questions, call 202/842-6690.



Rembrandt van Rijn, *An Old Woman Reading* (detail)  
Drumlanrig Castle, Dumfriesshire, Scotland,  
The Duke of Buccleuch and Queensberry, KT

#### Passes to the Exhibition

Admission to the exhibition is by free pass timed to entry at any time within a given half hour, entitling the bearer to unlimited time in the exhibition that day. Free passes for the current day can be obtained at the Exhibition Desk on the Ground Level of the East Building on a first-come, first-served basis.

Mail order reservations for individuals are available. To make a reservation, please send a written request at least two weeks before your desired date. Specify the preferred date and time for your visit; alternate dates and times should be included. You must enclose a stamped, self-addressed envelope for confirmation of your reservation; your pass will be held in your name. Send your request to:

THB Reservations  
Education Department  
National Gallery of Art  
Washington, D.C. 20565

An ample number of passes will also be kept available for visitors without previous reservations.

Groups of twenty or more may reserve passes in advance by writing to the same address.

#### Recorded Tour

Two recorded tours narrated by J. Carter Brown, Director of the National Gallery, are available at a nominal cost. One presents highlights of the exhibition; a second, designed for return visitors, is called "An Inside View." Special rates for groups may be arranged by calling 202/842-6246.

#### Exhibition Catalogue

The catalogue for *The Treasure Houses of Britain*, edited by the exhibition curator, Gervase Jackson-Stops, has been copublished by the National Gallery of Art and Yale University Press, New Haven and London. The 682-page catalogue contains essays and entries by 57 contributors and has 710 color illustrations. Catalogues are available by mail through the Publications Service, National Gallery of Art, Washington, D.C. 20565. The price for the softbound edition is \$24.95; please include an additional \$2.00 per order to cover shipping costs. Specify order no. 45-44-633.

#### Film Series

The festival of films relating to the British country house, its architecture, its gardens, and its use as a motif in feature films continues in December. The series is supported by a grant from Ford Motor Company. See reverse side for details.

# GENERAL INFORMATION

## NATIONAL GALLERY OF ART

Washington, D.C. 20565

The telephone number for general information is 202/737-4215.

### GALLERY HOURS:

Monday through Saturday 10:00 a.m. to 5:00 p.m.

Sunday 12 noon to 9:00 p.m.

East Building open Monday through Saturday  
10:00 a.m. to 7 p.m.

CLOSED CHRISTMAS DAY AND NEW YEAR'S DAY

The Gallery is located between 3rd and 7th Streets, N.W., on Constitution Avenue. The East and West Buildings are connected by an all-weather underground passage with a moving walkway. Entrances to the West Building are on the Mall, on 7th Street, on Constitution Avenue at 6th Street, which has a ramp for the handicapped, and off 4th Street. The entrance to the East Building is on 4th Street off National Gallery Plaza and also has a ramp for the handicapped.

### RESTAURANTS

Four restaurants offer luncheon and light snacks throughout the year. Monday through Saturday, hours of operation are:

Terrace Café: 11:00 to 6:00

Café/Buffer: 10:00 to 6:00

Cascade Café: 11:00 to 3:30

Garden Café: 11:00 to 4:30

Sunday hours are 12 noon to 7:00 p.m. for the Terrace Café, Café/Buffer, and Garden Café; 12 noon to 6:00 p.m. for the Cascade Café.

cover: John Piper, *View of Harewood*  
Harewood House, Yorkshire,  
The Earl and Countess of Harewood