



National Gallery of Art

CALENDAR OF EVENTS

April 1988

APRIL

Monday, March 28
through
Sunday, April 3

Monday, April 4
through
Sunday, April 10

Monday, April 11
through
Sunday, April 17

Monday, April 18
through
Sunday, April 24

COLLECTION HIGHLIGHTS

Brief gallery talks given by Education Department lecturers on a single work of art. Reproductions of the work discussed may be purchased in the Gallery's sales shops; a written text is available without charge.

Tuesday through Saturday 12:00 p.m.
Sunday 2:00 p.m.

March 29-April 3

Sebastiano and Marco Ricci
*Memorial to Admiral Sir
Clowdisley Shovell*
(Samuel H. Kress Collection)
West Building
Gallery 32

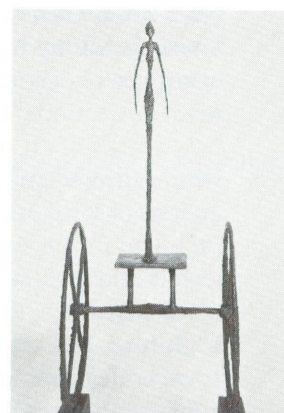
William J. Williams
Lecturer



April 5-April 10

Alberto Giacometti
The Chariot
(Gift of Enid A. Haupt)
East Building
Concourse Level

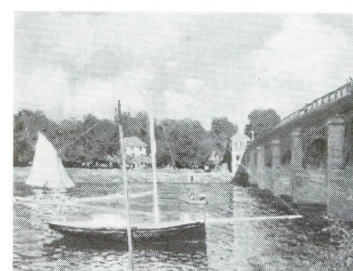
Julie Springer, Lecturer



April 12-April 17

Claude Monet
The Bridge at Argenteuil
(Collection of Mr. and
Mrs. Paul Mellon)
West Building
Gallery 81

Elizabeth Horn
Education Intern



April 19-April 24

Auguste Renoir
Odalisque
(Chester Dale Collection)
West Building
Gallery 89

Frances Feldman, Lecturer



SPECIAL TOURS

One-hour thematic tours given by Education Department lecturers.

Tuesday through Saturday 1:00 p.m.
Sunday 2:30 p.m.

March 29-April 3

The Easter Story in Art
West Building, Rotunda

John Cogswell, Lecturer

April 5-April 10

*A Survey of Twentieth-
Century Prints*
West Building, Rotunda

Donna Mann, Lecturer

April 12-April 17

*Lost in Thought: Scenes
of Contemplation in
Western Art*
West Building, Rotunda

Jill Steinberg, Lecturer

April 19-April 24

*Sweden: A Royal Treasury
1550-1700*
East Building
Ground Floor Lobby

Philip Leonard, Lecturer

FILMS

Free films on art and feature films related to special exhibitions. Unreserved seats are available on a first-come, first-served basis.

East Building Auditorium

March 28-April 3

Phaedra (Jules Dassin,
1961, 115 min.)
Sat. 2:30

April 5-April 10

*Collecting America:
Folk Art and the
Shelburne Museum*
(National Gallery of Art,
1988, 30 min.)
Tues. through Fri. 2:00

Les Anges du Péché
(Robert Bresson, 1943,
73 min.) and *Les Dames
du Bois de Boulogne*
(Robert Bresson, 1944,
90 min.)
Sat. 2:00
Sun. 6:00

April 13-April 17

Frank Stella at the Fogg
(James Ackerman, 1985,
22 min.) and *Frank Stella
and Larry Poons: The New
Abstraction* (Lane Slate for
NET, 1965, 25 min.)
Wed. through Sat. 12:30
Sun. 1:00

Diary of a Country Priest
(Robert Bresson, 1950,
120 min.)
Sat. 2:30
Sun. 6:00

April 20-April 23

Roy Lichtenstein (Michael
Blackwood, 1976, 52 min.)
Wed. through Sat. 12:30

A Man Escaped (Robert
Bresson, 1956, 102 min.)
Sat. 2:30



A Man Escaped, 1956, by Robert Bresson, to be shown April 23 (Phototeque, New York)



Canada Goose, c. 1849, Shelburne Museum

SUNDAY LECTURES

Free lectures given by distinguished visiting scholars. No reservations needed, but seating is limited.

Sunday 4:00 p.m.
East Building Auditorium

April 3

*A Mathematical Perspective
on Art in Washington*

Thomas Brylawski
Professor of Mathematics
University of North Carolina
Chapel Hill
North Carolina

April 10

*Butter Sculpture, Giant
Roadside Statuary, and Other
Case Studies in Three-
Dimensional Americana:
The Aesthetics of Boosterism*

Karal Ann Marling
Professor of Art History
and American Studies
University of Minnesota
Minneapolis, Minnesota

April 17

*Sweden: A Royal Treasury
1550-1700*

Michael Conforti
Chief Curator and Bell
Curator of Decorative Arts
and Sculpture
The Minneapolis Institute
of Arts
Minneapolis, Minnesota

April 24

*"Midsummer Night's Dream"
and Botticelli's "Primavera"*

Lady Wedgwood
Professor of Art History
University of Evansville
at Harlaxton College
England
with
Richard Bauer
Resident Actor, Arena Stage
Washington



Tankard representing Apollo and the Muses, 1625-1650, Royal Collections, Stockholm

SUNDAY CONCERTS

Free concerts by the National Gallery Orchestra, recitalists, and ensembles. Unreserved seats available from 6:00 p.m. All concerts are broadcast live by WGMS 570 AM and 103.5 FM.

Sunday 7:00 p.m.
West Building, East Garden Court

April 3

Thomas Beveridge, *Baritone*

Works by Purcell, Virgil
Thomson, Dvorak,
Tchaikovsky, Beveridge

April 10

*Opening concert of the 45th
American Music Festival*
National Gallery Orchestra
George Manos, *Conductor*

Works by Bales, Waxman,
Cowell, Sessions

April 17

Norman Fischer, *Cello*
Jeanne Kierman Fischer,
Piano

Works by Rochberg, Carter,
Victor Herbert, Robert Sirota

April 24

Ingrid Lindgren, *Piano*

Works by Barber, Roy Harris,
Ruth Crawford-Seeger,
Emerson Myers

National Gallery of Art

Film Programs

"The Films of Robert Bresson," a ten-week series which begins on Saturday, April 9, and continues through Sunday, June 12, consists of all the principal films of this French master filmmaker known for his precise, minimal style and poetic formal abstractions. The series will open with two early works: *Les Anges du Péché* (1943) and *Les Dames du Bois de Boulogne* (1944). On April 16, Annette Michelson, professor of cinema studies at New York University and a former fellow of the National Gallery's Center for Advanced Study in the Visual Arts, will introduce Bresson's *Diary of a Country Priest* (1950). Please see reverse side for additional information.

Expanded Restaurant Service

The National Gallery food services have recently been expanded to include afternoon tea service and ice cream in the Cascade Café each day from 2:30 to 4:30 and dinner service on Sunday evenings in the Garden Café from 5:00 to 7:30.

INTRODUCTORY TOURS

Introduction to the West Building Collections

Monday through Saturday 3:00 p.m.
Sunday 5:00 p.m.
West Building, Rotunda

Family Programs

This month's programs feature the special exhibition, *The Human Figure in Early Greek Art*. Although planned for families with children ages 6 to 12, the topic may also be of interest to teenagers. Parents and children will see a film, *Ancient Games*, in which recent pentathlon champions re-create Olympic events in the stadium at Delphi. Afterward, families will take a tour of objects in the exhibition related to athletics. Participants are asked to meet in the Small Auditorium in the East Building at 10:00 a.m. each Saturday morning for the free program, which lasts an hour and a half. Children must be accompanied by an adult. Please call (202) 842-6249 for reservations.

Foreign Language Tours

Regularly scheduled foreign language tours of the West Building are offered on Tuesdays at noon beginning in the Rotunda. The April schedule is as follows: April 5 *French*; April 12 *Spanish*; April 19 *German*; April 26 *Italian*.

OPENING EXHIBITION

Sweden: A Royal Treasury 1550-1700

April 13-September 5, 1988
East Building, Mezzanine Level

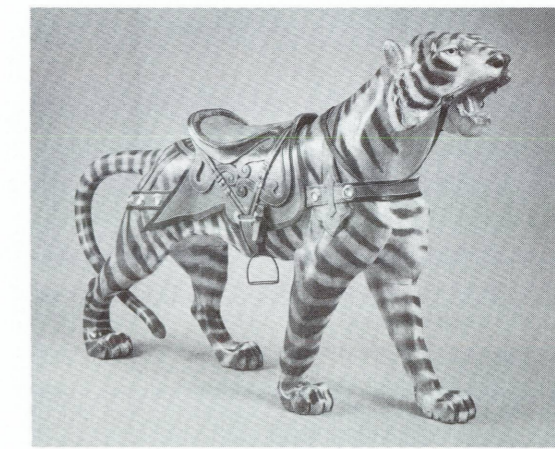
An exhibition of more than 100 royal objects from an extraordinary chapter in European history—the baroque period in Sweden—opens this month. The exhibition, organized by the National Gallery and the Minneapolis Institute of Arts, takes part in "New Sweden '88," a national observance this year of the 350th anniversary of the first permanent Swedish colony in North America. Featuring examples of decorative arts from the Swedish royal collections, the show will demonstrate how works of art of great aesthetic merit were gathered and used by the kings and queens of 16th- and 17th-century Sweden. Included in the exhibition will be royal jewels and regalia, armor and inlaid firearms, royal costumes, drawings, enamels, sculpture, and other objects from Swedish royal collections. King Gustavus Adolphus' gold-embroidered wedding suit from 1620 will be on display along with sumptuously embroidered gold and silver costumes commissioned from Paris in 1654 for the coronation of Charles X.

The exhibition has been made possible through contributions from The Boeing Company, the Federation of Swedish Industries, and the Swedish Government. It is supported by an indemnity from the Federal Council on the Arts and the Humanities. It will travel to the Minneapolis Institute of Arts October 9, 1988-January 1, 1989.

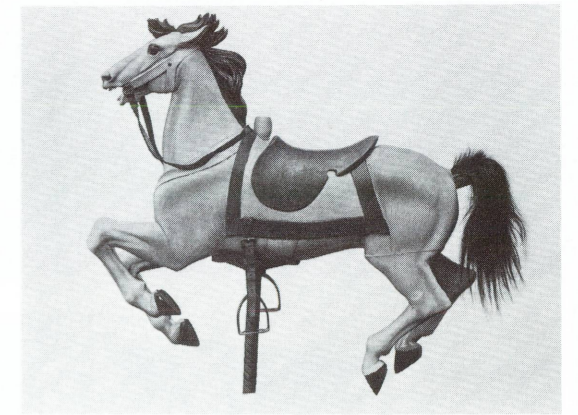


Skokloster Shield, c. 1560, Skokloster Castle Museum

CLOSING EXHIBITIONS



Tiger, before 1903, made by Gustav A. Dentzel Carousel Company of Philadelphia, Shelburne Museum



Carousel Horse, watercolor rendering by John Kelleher, c. 1939, Index of American Design, National Gallery of Art

An American Sampler: Folk Art from the Shelburne Museum

Through April 14, 1988
East Building, Upper Level

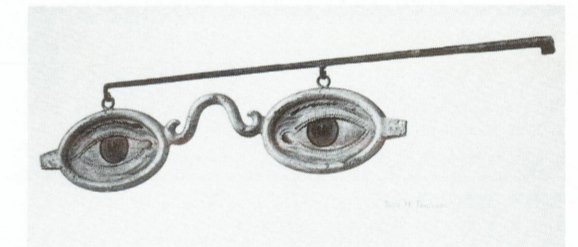
The Shelburne Museum in Vermont holds one of the greatest collections of its kind anywhere, yet most of these works from America's artistic and cultural heritage are little known to the American public. Among the 110 objects included in the exhibition are quilts and coverlets, hooked rugs, weather vanes and whirligigs, decoys, carousel animals, trade signs, and carved figures. The selection has been overseen by John Wilmerding, deputy director of the National Gallery of Art and noted scholar of American art. Organized to coincide with the Shelburne Museum's 40th anniversary, the exhibition will travel to the Amon Carter Museum, Fort Worth; the Denver Art Museum; the Los Angeles County Museum of Art; the Wadsworth Atheneum, Hartford; the New-York Historical Society; and the Worcester Art Museum. The exhibition has been made possible through a generous grant from The New England.

Special Film: A thirty-minute film, *Collecting America: Folk Art and the Shelburne Museum* will be screened in the East Building Auditorium April 5-7 at 2:00 p.m.

Naive Visions

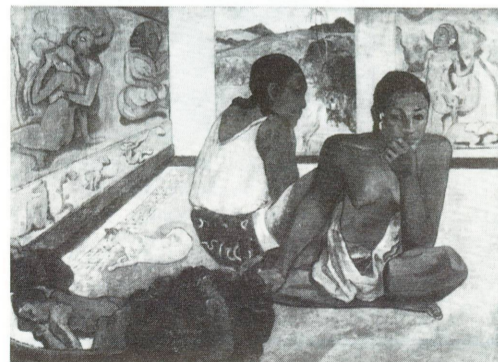
Through April 17, 1988
East Building, Ground Floor

Two dozen American naive paintings from the collection given to the National Gallery by Col. Edgar William and Bernice Chrysler Garbisch, twenty-seven toys from the Shelburne Museum, and approximately forty watercolor renderings of American decorative arts from the Gallery's Index of American Design make up this installation. The Index project, part of the federal government's effort to employ artists during the Depression, contains approximately 17,000 watercolors. Some of the objects now at Shelburne were recorded by the Index in the 1930s and are included in the installation.



Shop Sign, watercolor rendering by John H. Tercuzzi, c. 1941, Index of American Design, National Gallery of Art

SUMMER SHOWS OPENING IN MAY



Paul Gauguin, *Te rarioa (The Dream)*, 1897, Courtauld Institute Galleries (Courtauld Collection)

Paintings by Fitz Hugh Lane (May 15-September 5, 1988) will focus on the finest work by this 19th-century American artist, founder of the luminist movement. Lane's marine paintings and landscapes will be presented thematically. Included will be his Gloucester pictures, the Boston Harbor group, and sequences of images along the Maine coast. The exhibition is made possible by a grant from GTE Corporation.



Fitz Hugh Lane, *Ships in Ice* (detail), 1850s, Museum of Fine Arts, Boston

Masterworks from Munich: 16th- to 18th-Century Paintings from the Alte Pinakothek (May 29-September 5, 1988) will include 62 paintings by major Italian, Flemish, Dutch, German, Spanish, and French artists from the 16th through the 18th centuries from one of the greatest public collections in Europe. The exhibition is supported in part by The German-American Cultural Fund, Inc., and by an indemnity from the Federal Council on the Arts and the Humanities.

The Art of Paul Gauguin (May 1-July 31, 1988) will include over 240 paintings, pieces of sculpture, and works on paper in addition to a number of rarely seen ceramics by this celebrated post-impressionist master. This exhibition is made possible by AT&T. It is supported by an indemnity from the Federal Council on the Arts and the Humanities.

On weekends, holidays, and crowded weekdays passes will be distributed as necessary on a first-come, first-served basis. Passes are for specified half-hour entry times. Gauguin passes may be obtained at the special exhibition desk located on the ground floor of the East Building.

The Flag Paintings of Childe Hassam (May 8-July 17, 1988) will present a series of paintings made between the years 1916 and 1919 when this American impressionist used the flag-decorated streets of New York City as a theme to explore elements of composition and complexities of shape, color, and light. The exhibition has been organized by the Los Angeles County Museum of Art and is supported by Bell Atlantic.

CONTINUING EXHIBITION



Square Marble Relief Base for a Statue, end of sixth century B.C., National Archaeological Museum, Athens © Greek Ministry of Culture

The Human Figure in Early Greek Art

Through June 12, 1988
East Building, Concourse Level

Sixty-seven works of Greek art from the 10th to the 5th centuries B.C., the majority of which have never traveled to the United States, make up this exhibition. It explores the treatment of the human figure during a critical formative era, which culminated in Greek classicism and became the basis for Western art thereafter.

The marble, bronze, and terracotta sculptures and painted vases on display originated in Athens and other major centers of the Greek world and from the great Pan-Hellenic sanctuaries of Olympia and Delphi. The exhibition has been selected from the permanent collections of four museums in Athens and a number of museums elsewhere in Greece.

After its showing at the National Gallery, the exhibition will travel to the Nelson-Atkins Museum of Art in Kansas City, Missouri (July 16-Oct. 2, 1988), the

Los Angeles County Museum of Art (Nov. 13, 1988-Jan. 15, 1989), The Art Institute of Chicago (Feb. 18-May 7, 1989), and the Museum of Fine Arts, Boston (June 7-Sept. 3, 1989).

The exhibition, which has been organized by the National Gallery of Art and the Greek Ministry of Culture, is supported in part by The Paradina Inc. Trust and Joannou & Paraskevaides (Overseas) Ltd., and by an indemnity from the Federal Council on the Arts and the Humanities. The official airline carrier for the exhibition is Olympic Airways.

Special Film: A thirty-minute film, *Light of the Gods*, will be screened at scheduled times in the audiovisual theater adjoining the exhibition.

Recorded Tour: A recorded tour is available at the entrance to the exhibition.

Master Drawings from The Armand Hammer Collection

Through April 17, 1988
West Building, Ground Floor

Selections from one of the finest collections of drawings in American private hands are exhibited in the Armand Hammer Collection galleries on the ground floor of the West Building. The current selection on view consists of 18th-century drawings. This is one of the strongest areas in the Hammer Collection, including master works by Watteau, Tiepolo, and Boucher, as well as a number of recent acquisitions added to the collection last summer.

Continuing on view is Raphael's large-scale preparatory drawing, or "cartoon," for the painting *La Belle Jardinière* in the Louvre. Pricked for transfer to a panel, it is of the same size as the painting in Paris, and is the only such full-scale compositional cartoon for a painting by this great Renaissance artist in the United States. It has been acquired by the National Gallery of Art through the generosity of the Armand Hammer Foundation, and is on display in a gallery reminiscent of a Renaissance chapel, recently constructed to house it and other drawings from the Hammer Collection on a rotating basis.



Raphael, *The Madonna and Child with Saint John*, 1507, National Gallery of Art, Washington, Purchased with funds from The Armand Hammer Foundation

NATIONAL GALLERY OF ART

Washington, D.C. 20565

OFFICIAL BUSINESS

PENALTY FOR PRIVATE USE, \$300

GENERAL INFORMATION

GALLERY HOURS

Monday through Saturday 10:00 to 5:00

Sunday noon to 9:00

The telephone number for general information is (202) 737-4215.

To change your mailing address for the Calendar of Events, please mail a copy of your new address to the Information Office, National Gallery of Art, Washington, D.C. 20565, taking care to include the mailing label from your last Calendar of Events.

The Gallery is located between 3rd and 7th Streets, N.W., on Constitution Avenue. The East and West Buildings are connected by an all-weather underground passage with a moving walkway. Entrances to the West Building are on the Mall, on 7th Street, on Constitution Avenue at 6th Street, which has a ramp for the handicapped, and off 4th Street. The entrance to the East Building is on 4th Street off National Gallery Plaza and also has a ramp for the handicapped.

RESTAURANTS

Four restaurants offer luncheon and light snacks throughout the year. Hours of operation from Monday through Saturday are:

Terrace Café:	11:00 to 4:30
Concourse Buffet:	10:00 to 4:00
Cascade Café:	11:00 to 2:30 (lunch) 2:30 to 4:30 (afternoon tea service and ice cream)
Garden Café:	11:00 to 4:30

Sunday hours are noon to 6:00 for the Terrace Café and Concourse Buffet; noon to 3:30 for the Cascade Café; and noon to 7:30 for the Garden Café. The Garden Café offers dinner service from 5:00 to 7:30.

COVER: *Burial Crown of Kristina, Consort of Charles IX*, 1626, Property of Strängnäs Cathedral, on view in the Royal Armory, Stockholm

BULK RATE
POSTAGE & FEES PAID
National Gallery of Art
Permit No. G-47

TIME VALUE