



Alfred Stieglitz (editor/publisher) after Various Artists

Alfred Stieglitz

American, 1864 - 1946

Two Towers—New York

1911, printed 1913

photogravure

image: 19.5 × 15.9 cm (7 11/16 × 6 1/4 in.)

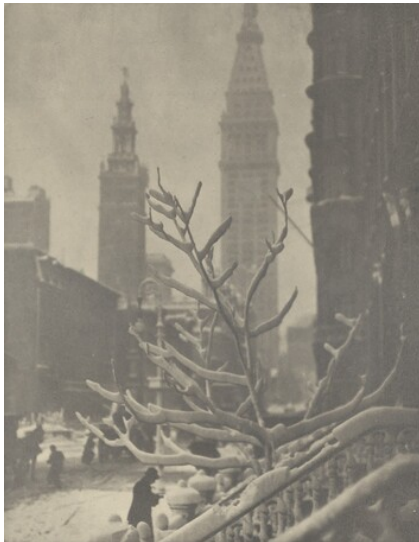
Alfred Stieglitz Collection 1949.3.1280.36

Key Set Number 351

Image courtesy of the Philadelphia Museum of Art

KEY SET ENTRY

Related Key Set Photographs



Alfred Stieglitz

Two Towers—New York

1911, printed in or before 1913

photogravure

Key Set Number 352

same negative

Remarks

NATIONAL GALLERY OF ART ONLINE EDITIONS *Alfred Stieglitz Key Set*

The view looks south from a stoop on the west side of Madison Avenue between 29th and 30th streets toward the towers of Madison Square Garden (left) and the Metropolitan Life Building (right).

Lifetime Exhibitions

A print from the same negative—perhaps a photograph from the Gallery’s collection—appeared in the following exhibition(s) during Alfred Stieglitz’s lifetime:

1913, New York (no. 30, as *Two Towers, New York*, 1911)

1915, New York (as *Madison Square & the Metropolitan Tower*)

1944, Philadelphia (no. 25, as *The Two Towers, New York*, 1912)

Lifetime Publications

A reproduction of this work appeared in the following publication(s) during Alfred Stieglitz’s lifetime:

Camera Work 44 (October 1913): pl. 2 (ill., *Two Towers—New York*)

Note

Image courtesy of the Philadelphia Museum of Art

PROVENANCE

Georgia O’Keeffe; gift to NGA, 1949.

BIBLIOGRAPHY

2002 Greenough, Sarah. *Alfred Stieglitz: The Key Set: The Alfred Stieglitz Collection of Photographs*. Washington, 2002: vol. 1, cat. 351.

To cite: Sarah Greenough, “Alfred Stieglitz/*Two Towers—New York*/1911, printed 1913,” *Alfred Stieglitz Key Set*, NGA Online Editions, <https://purl.org/nga/collection/artobject/204634> (accessed April 19, 2025).

