

Alfred Stieglitz  
American, 1864 - 1946

## *Dr. Leopold Stieglitz*

1919

gelatin silver print

image: 24.3 x 19.1 cm (9 9/16 x 7 1/2 in.)

sheet: 25.1 x 20.1 cm (9 7/8 x 7 15/16 in.)

Alfred Stieglitz Collection 1949.3.385

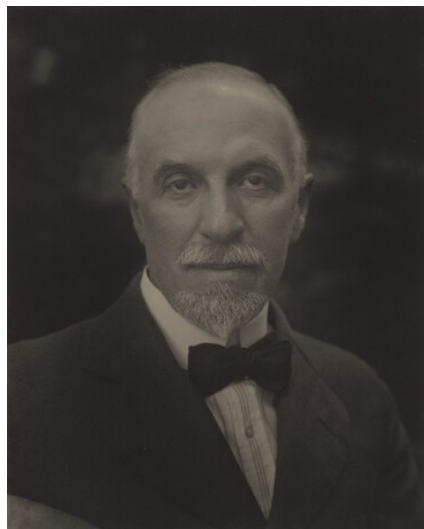
Stieglitz Estate Number 54D

Key Set Number 611

---

### KEY SET ENTRY

#### Related Key Set Photographs



Alfred Stieglitz  
*Professor Julius Stieglitz*  
1919  
gelatin silver print  
Key Set Number 610

#### Remarks

Julius' twin brother, Leopold, was a physician who often cared for his older brother Alfred.

*Dr. Leopold Stieglitz*

© National Gallery of Art, Washington



**oe** NATIONAL GALLERY OF ART ONLINE EDITIONS  
*Alfred Stieglitz Key Set*

## Lifetime Exhibitions

A print from the same negative—perhaps a photograph from the Gallery's collection—appeared in the following exhibition(s) during Alfred Stieglitz's lifetime:

1921, New York (no. 69, as *Dr. Leo Stieglitz*, 1919)

---

## INSCRIPTION

by Alfred Stieglitz, on mount, center verso, in graphite: Dr. L. Stieglitz 1916 ? /  
Exhibition 1921

by later hand, on mount, lower left verso, in graphite: 54 D

---

## PROVENANCE

Georgia O'Keeffe; gift to NGA, 1949.

---

## BIBLIOGRAPHY

2002 Greenough, Sarah. *Alfred Stieglitz: The Key Set: The Alfred Stieglitz Collection of Photographs*. Washington, 2002: vol. 1, cat. 611.

---

**To cite:** Sarah Greenough, "Alfred Stieglitz/*Dr. Leopold Stieglitz*/1919," *Alfred Stieglitz Key Set*, NGA Online Editions, <https://purl.org/nga/collection/artobject/35536> (accessed April 19, 2025).