



Alfred Stieglitz
American, 1864 - 1946

Charles Duncan

1920

palladium print

image: 23.8 × 18.9 cm (9 3/8 × 7 7/16 in.)

sheet: 25.2 × 20.2 cm (9 15/16 × 7 15/16 in.)

mount: 51.4 × 39.7 cm (20 1/4 × 15 5/8 in.)

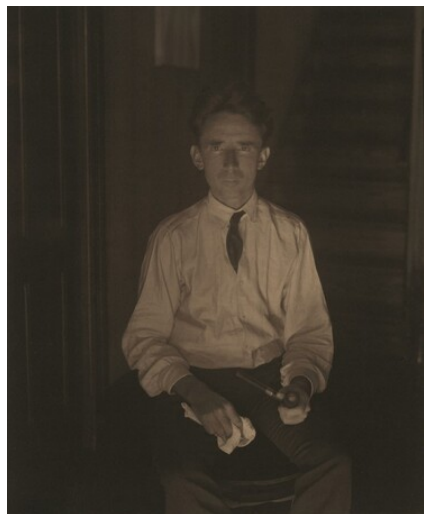
Alfred Stieglitz Collection 1949.3.427

Stieglitz Estate Number 29E

Key Set Number 646

KEY SET ENTRY

Related Key Set Photographs



Alfred Stieglitz
Charles Duncan
1920
palladium print
Key Set Number 647
same negative

Stieglitz Collections

Charles Duncan

© National Gallery of Art, Washington

oe NATIONAL GALLERY OF ART ONLINE EDITIONS
Alfred Stieglitz Key Set

A corresponding print was given to the following institution(s) by Alfred Stieglitz during his lifetime, or was received or acquired from the estate:

Museum of Fine Arts, Boston, 50.837

Lifetime Exhibitions

A print from the same negative—perhaps a photograph from the Gallery’s collection—appeared in the following exhibition(s) during Alfred Stieglitz’s lifetime:

1921, New York (no. 72, as *Charles Duncan*, 1920)

1932, New York (no. 85, as *Charles Duncan*, 1921)

INSCRIPTION

by Doris Bry, on mount, lower left, in graphite: Treated by Steichen—6/50

by later hand, center right verso, in graphite: K / 29 E / (1st / smaller / lighter); on mount, lower left verso: 29 E

PROVENANCE

Georgia O'Keeffe; gift to NGA, 1949.

BIBLIOGRAPHY

2002 Greenough, Sarah. *Alfred Stieglitz: The Key Set: The Alfred Stieglitz Collection of Photographs*. Washington, 2002: vol. 1, cat. 646.

To cite: Sarah Greenough, “Alfred Stieglitz/*Charles Duncan*/1920,” *Alfred Stieglitz Key Set*, NGA Online Editions, <https://purl.org/nga/collection/artobject/35578> (accessed April 19, 2025).