



Alfred Stieglitz  
American, 1864 - 1946

## *Bly and Venus*

1920

gelatin silver print

sheet (trimmed to image): 8.5 x 8.6 cm (3 3/8 x 3 3/8 in.)

Alfred Stieglitz Collection 1949.3.450

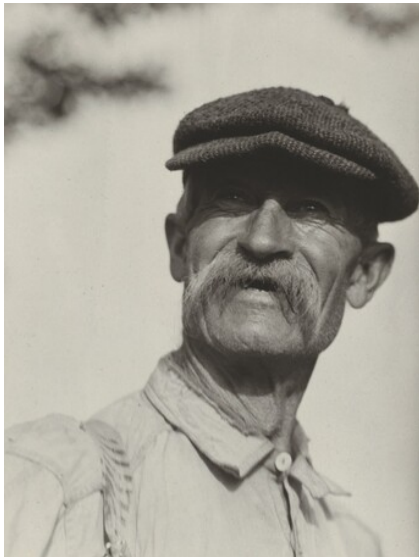
Stieglitz Estate Number 206B

Key Set Number 624

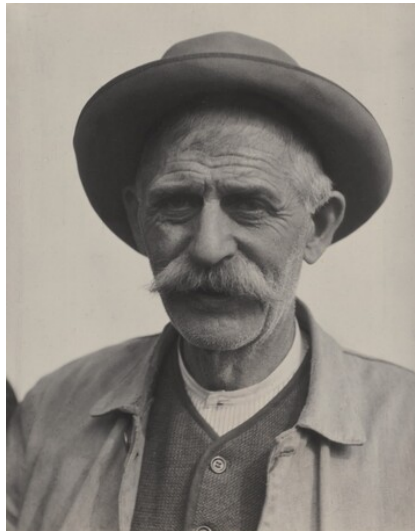
---

### KEY SET ENTRY

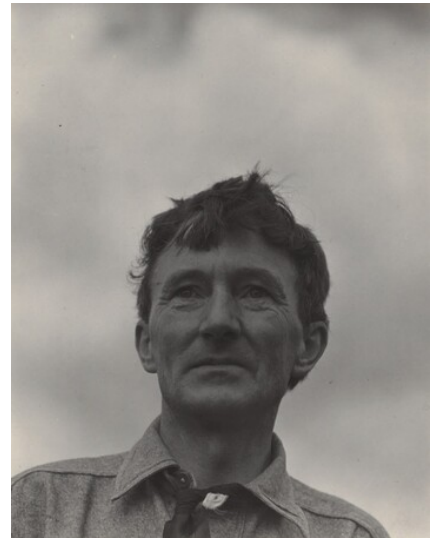
Related Key Set Photographs



Alfred Stieglitz  
*Bly*  
1920  
gelatin silver print  
Key Set Number 625



Alfred Stieglitz  
*Fred Varnum*  
1920  
gelatin silver print  
Key Set Number 626



Alfred Stieglitz  
*Donald Davidson*  
1920  
gelatin silver print  
Key Set Number 627

#### Remarks

Stieglitz probably made this photograph of Bly, a gardener at Lake George, during the move from Oaklawn, a big house on the shore of the lake, to a smaller farmhouse on the property (see Key Set number 623).

#### Stieglitz Collections

A corresponding print was given to the following institution(s) by Alfred Stieglitz during his lifetime, or was received or acquired from the estate:

Beinecke Rare Book and Manuscript Library, Yale University, New Haven, YCAL MSS 85, box 122, folder 2455

Fisk University, Nashville, and Crystal Bridges Museum of American Art, Bentonville, ASC.2012.87

#### Other Collections

A print corresponding with this photograph can also be found in the following collection(s):

## NATIONAL GALLERY OF ART ONLINE EDITIONS

*Alfred Stieglitz Key Set*

Philadelphia Museum of Art, 1968-162-30 (inscribed on postcard to Carl Zigrosser stamped 12 September 1921: When Greek meets Greek / they send out an / Anonymous Letter / of Protest / Venus is on / the Job making converts.— / Long live the / Art-Makers. / Greetings, S.)

Private collection

Location unknown (inscribed on postcard to Katharine Rhoades: Weighed 2 1/2 lbs when he was born. And merely came into the world to have this picture taken—Is over 70—doesn't feel a day over 17—knows he'll get to be more than 100—will shoot to kill any one trying to rob him of a moment's freedom . . .)

Lifetime Exhibitions

A print from the same negative—perhaps a photograph from the Gallery's collection—appeared in the following exhibition(s) during Alfred Stieglitz's lifetime:

1923, New York (no. 116, as *Bly*, 1920)

---

### INSCRIPTION

by later hand, on mount, upper left verso, in graphite: 206 B

---

### PROVENANCE

Georgia O'Keeffe; gift to NGA, 1949.

---

### EXHIBITION HISTORY

2002 Alfred Stieglitz: Known and Unknown, National Gallery of Art, Washington, DC, June 2–September 2, 2002; The Museum of Fine Arts, Houston, October 6, 2002–January 5, 2003

---

## BIBLIOGRAPHY

- 1947 Sweeney, James J. "Rebel with a Camera." *New York Times* (8 June 1947).
- 2002 Greenough, Sarah. *Alfred Stieglitz: The Key Set: The Alfred Stieglitz Collection of Photographs*. Washington, 2002: vol. 1, cat. 624.
- 

**To cite:** Sarah Greenough, "Alfred Stieglitz/*Bly and Venus*/1920," *Alfred Stieglitz Key Set*, NGA Online Editions, <https://purl.org/nga/collection/artobject/35601> (accessed April 19, 2025).