

East of the Mississippi

March 12, 2017 - July 16, 2017

To order publicity images: Publicity images are available only for those objects accompanied by a thumbnail image below. Please email pr-images@nga.gov or fax (202) 789-3044 and designate your desired images, using the "File Name" on this list. Please include your name and contact information, press affiliation, deadline for receiving images, the date of publication, and a brief description of the kind of press coverage planned.

Links to download the digital image files will be sent via e-mail.

Usage: Images are provided exclusively to the press, and only for purposes of publicity for the duration of the exhibition at the National Gallery of Art. All published images must be accompanied by the credit line provided and with copyright information, as noted.

Important: The images displayed on this page are for reference only and are not to be reproduced in any media.

Unknown 19th Century

View of House, 1800 - 1899

tintype

Collection of William L. Schaeffer

Cat. No. 1

Hugh Lee Pattinson

Horseshoe Falls, 1840

daguerreotype

overall: 16.51 × 21.59 cm (6 1/2 × 8 1/2 in.)

Robinson Library, Newcastle University, England

Cat. No. 2 / File Name: 3960-002.jpg

Hugh Lee Pattinson

American Falls, 1840

daguerreotype

overall: 16.51 × 21.59 cm (6 1/2 × 8 1/2 in.)

Robinson Library, Newcastle University, England



Cat. No. 3

Friedrich Salathé after Hugh Lee Pattinson

Niagara, Chute du Fer à Cheval, from Paul de la Garenne and Noel-Marie-Paymal Lerebours, "Excursions daguerriennes: Vues et monuments les plus remarquables du globe" (Paris, 1842), 1842

bound volume

overall: 26.67 × 38.1 cm (10 1/2 × 15)

Hans P. Kraus Jr., New York

:

Cat. No. 4

John W. Draper

View of Broadway Featuring the Unitarian Church of the Messiah, 1839 - 1840

daguerreotype

image: 6.3 × 8.7 cm (2 1/2 × 3 7/16 in.)

National Museum of American History, Behring Center, Smithsonian Institution, Washington

Cat. No. 5

Henry Coit Perkins

View of Newburyport Looking Northward from Harris Street Church, c. 1839

daguerreotype

overall: 16.5 × 21.6 cm (6 1/2 × 8 1/2 in.)

Historical Society of Old Newbury, Newburyport

Cat. No. 6

American 19th Century

View of Foundry at Oak Hill, c. 1850

daguerreotype

overall: 7 × 9.1 cm (2 3/4 × 3 9/16 in.)

Collection of Michael Mattis and Judith Hochberg

Cat. No. 7 / File Name: 3960-215.jpg

American 19th Century

Saint Anthony Falls, Minnesota, 1850s

daguerreotype

overall: 7.2 × 9.7 cm (2 13/16 × 3 13/16 in.)

Daniel Wolf, Inc.



Cat. No. 8

Frederick Langenheim and William Langenheim

R.R. Suspension Bridge, R.R. Track, c. 1855

stereoscopic glass transparency

image: 6.6 × 6 cm (2 5/8 × 2 3/8 in.)

support: 8.3 × 17.2 × 0.4 cm (3 1/4 × 6 3/4 × 3/16 in.)

Canadian Centre for Architecture, Montréal

Cat. No. 9 / File Name: 3960-004.jpg

Samuel A. Bemis

Crawford Notch and Hotel, White Mountains, New Hampshire, 1840-1842

daguerreotype

Image: 14.6 × 20 cm (5 3/4 × 7 7/8 in.)

Lent by The Metropolitan Museum of Art, Gilman Collection, Gift of The Howard Gilman Foundation, 2005 (2005.100.207)



:
Cat. No. 10
Samuel A. Bemis
View within Crawford Notch, New Hampshire, 1840-1842
daguerreotype
image: 15.24 × 20.32 cm (6 × 8 in.)
mat: 16.2 × 21.3 cm (6 3/8 × 8 3/8 in.)
overall: 23.8 × 28.9 cm (9 3/8 × 11 3/8 in.)
The J. Paul Getty Museum, Los Angeles

Cat. No. 11
American 19th Century
View from Pine Hill Cemetery, New Hampshire, c. 1855
daguerreotype
image: 8.9 × 11.8 cm (3 1/2 × 4 5/8 in.)
plate: 11.43 × 13.97 cm (4 1/2 × 5 1/2 in.)
case: 12.07 × 15.24 cm (4 3/4 × 6 in.)
Collection of Greg French

Cat. No. 12
American 19th Century
View, c. 1850
daguerreotype
image: 8.8 × 12.2 cm (3 7/16 × 4 13/16 in.)
plate: 10.8 × 13.97 cm (4 1/4 × 5 1/2 in.)
half case: 12.07 × 15.24 cm (4 3/4 × 6 in.)
full case: 24.13 × 15.24 cm (9 1/2 × 6 in.)
Collection of Greg French

Cat. No. 13
American 19th Century
View of a Village, c. 1850
daguerreotype
overall: 5.7 × 6.9 cm (2 1/4 × 2 11/16 in.)
Collection of William L. Schaeffer

Cat. No. 14
American 19th Century
View with Gravestone, c. 1850
daguerreotype
case: 12.07 × 15.24 cm (4 3/4 × 6 in.)
image: 10.16 × 12.7 cm (4 × 5 in.)
Daniel Wolf, Inc.

:

Cat. No. 15
American 19th Century
View of Farm in Worcester, Massachusetts, c. 1850
daguerreotype
image: 8.9 × 12.2 cm (3 1/2 × 4 13/16 in.)
plate: 10.8 × 13.97 cm (4 1/4 × 5 1/2 in.)
half case: 12.07 × 15.24 cm (4 3/4 × 6 in.)
full case: 24.13 × 15.24 cm (9 1/2 × 6 in.)
Collection of Greg French

Cat. No. 16
American 19th Century
View of House, c. 1850
daguerreotype
image: 6.6 × 9 cm (2 5/8 × 3 9/16 in.)
framed: 7.6 × 10.2 cm (3 × 4 in.)
case: 9.4 × 12 × 1.7 cm (3 11/16 × 4 3/4 × 11/16 in.)
National Gallery of Art, Washington, Pepita Milmore Memorial Fund

Cat. No. 17
McElroy
View of a Barn, c. 1850
daguerreotype, embossed leather case with roses
unframed: 6.99 × 8.26 cm (2 3/4 × 3 1/4 in.)
case: 7.94 × 9.21 × 1.59 cm (3 1/8 × 3 5/8 × 5/8 in.)
Collection of W. Bruce and Delaney H. Lundberg

Cat. No. 18
American 19th Century
View of House with Greenhouse, Virginia, c. 1850
daguerreotype
image: 6.6 × 9 cm (2 5/8 × 3 9/16 in.)
framed: 7.9 × 10.3 cm (3 1/8 × 4 1/16 in.)
case: 9.5 × 12 × 1.6 cm (3 3/4 × 4 3/4 × 5/8 in.)
National Gallery of Art, Washington, Robert Menschel and the Vital Projects Fund

Cat. No. 19
William Southgate Porter
Panorama of Fairmount, 1848
eight daguerreotypes
overall: 36.7 × 99.8 cm
George Eastman Museum, gift of the 3M Foundation

Cat. No. 21
American 19th Century
View of the Connecticut River, Factory and Tidal Dock, late 1840s
daguerreotype
unframed: 10.8 × 13.97 cm (4 1/4 × 5 1/2 in.)
framed: 12.07 × 15.24 × 1.91 cm (4 3/4 × 6 × 3/4 in.)
overall: 8.89 × 11.91 cm (3 1/2 × 4 11/16 in.)
Collection of W. Bruce and Delaney H. Lundberg

Cat. No. 22
American 19th Century
Seneca Falls, New York (Downstream), c. 1850

daguerreotype

plate: 10.8 × 14 cm (4 1/4 × 5 1/2 in.)

image: 8.89 × 12.07 cm (3 1/2 × 4 3/4 in.)

Smithsonian American Art Museum, Museum purchase from the Charles Isaacs Collection made possible in part by the Luisita L. and Franz H. Denghausen Endowment

Cat. No. 23 / File Name: 3960-008.jpg
Frederick Langenheim and William Langenheim
Panorama of the Falls of Niagara, 1845

five daguerreotypes

image: 8.89 × 6.99 cm (3 1/2 × 2 3/4 in.)

unframed: 30.48 × 45.72 cm (12 × 18 in.)

framed: 33.02 × 49.21 cm (13 × 19 3/8 in.)

Lent by The Metropolitan Museum of Art, Gilman Collection, Gift of The Howard Gilman Foundation, 2005 (2005.100.495)



Cat. No. 24
Platt D. Babbitt
Niagara Falls, c. 1855

daguerreotype

image (oval): 14 × 18.3 cm (5 1/2 × 7 3/16 in.)

overall: 23 × 28.7 cm (9 1/16 × 11 5/16 in.)

National Gallery of Art, Washington, Robinson Family Fund in memory of C. David Robinson and Clinton Jean Wright Fund

Cat. No. 25
Thomas M. Easterly
Chouteau's Pond, View South from Eighth and Clark Streets, 1850

daguerreotype

image: 7.62 × 10.16 cm (3 × 4 in.)

Missouri Historical Society, Saint Louis, Thomas Easterly Daguerreotype Collection

Cat. No. 26
Thomas M. Easterly
Chouteau's Pond, View of Drained Area with Cows, Collier's White Lead Factory in Background, c. 1854

daguerreotype

image: 8.26 × 11.43 cm (3 1/4 × 4 1/2 in.)

Missouri Historical Society, Saint Louis, Thomas Easterly Daguerreotype Collection

Cat. No. 27
Thomas M. Easterly
Queenston, 1853

daguerreotype

image: 7.62 × 8.89 cm (3 × 3 1/2 in.)

Missouri Historical Society, Saint Louis, Thomas Easterly Daguerreotype Collection

:

Cat. No. 28

Thomas M. Easterly

Chouteau's Mill Creek, East from Thirteenth and Gratiot, Showing Construction of Mill Creek Sewer, 1868

daguerreotype

image: 9.53 × 12.7 cm (3 3/4 × 5 in.)

Missouri Historical Society, Saint Louis, Thomas Easterly Daguerreotype Collection

Cat. No. 29

Thomas M. Easterly

View on the Mississippi River, c. 1852-1853

daguerreotype

image: 6.99 × 8.89 cm (2 3/4 × 3 1/2 in.)

Missouri Historical Society, Saint Louis, Thomas Easterly Daguerreotype Collection

Cat. No. 30 / File Name: 3960-075.jpg

Thomas M. Easterly

St. Louis Levee, 1852

daguerreotype

image: 9.53 × 12.7 cm (3 3/4 × 5 in.)

Missouri Historical Society, Saint Louis, Thomas Easterly Daguerreotype Collection



Cat. No. 31

Thomas M. Easterly

Big Mound during Destruction, the Last of the Big Mound, 1869

daguerreotype

image: 9.53 × 12.7 cm (3 3/4 × 5 in.)

Missouri Historical Society, Saint Louis, Thomas Easterly Daguerreotype Collection

Cat. No. 33

Frederick Langenheim and William Langenheim

Wirebridge over the Schuylkill, US Navy Yard, and Gray's Ferry, 1850

salted paper print

page size: 32.7 × 26.67 cm (12 7/8 × 10 1/2 in.)

Missouri Historical Society, Saint Louis, Langenheim Album

Cat. No. 34

Robert Montgomery Bird

Water Gap, 1853

paper negative

overall: 12.38 × 14.61 cm (4 7/8 × 5 3/4 in.)

The Library Company of Philadelphia

Cat. No. 35

Robert Montgomery Bird

Delaware Water Gap, 1853

salted paper print

overall: 14.29 × 17.78 cm (5 5/8 × 7 in.)

The Library Company of Philadelphia

:
Cat. No. 36
American 19th Century
View of Cornfield with Farmhouse, 1858-1860
ambrotype
image: 6.83 × 5.56 cm (2 11/16 × 2 3/16 in.)
Collection of Robin Kelsey & Michael Lehr

Cat. No. 37
James E. McClees
Old Columbia Bridge, Philadelphia, 1859
stereoscopic albumen prints
overall: 8.57 × 17.15 cm (3 3/8 × 6 3/4 in.)
The Library Company of Philadelphia

Cat. No. 38
Theodore Lilienthal
Bird's-Eye View from Moreau's Restaurant, Mouth of Bayou St. John, 1867
stereoscopic albumen prints
image: 7.3 × 14 cm (2 7/8 × 5 1/2 in.)
The Historic New Orleans Collection

Cat. No. 39
Theodore Lilienthal
View of Canal, c. 1866
stereoscopic albumen prints
image: 7.3 × 14 cm (2 7/8 × 5 1/2 in.)
The Historic New Orleans Collection

Cat. No. 40
American 19th Century
Niagara Falls, c. 1860
albumen print
unframed: 33.02 × 43.18 cm (13 × 17 in.)
Collection of Nancy and Thomas Sterling

Cat. No. 41 / File Name: 3960-019.jpg
Victor Prevost
Rocky Hillside, c. 1854
salted paper print
image: 31.2 × 24.9 cm (12 5/16 × 9 13/16 in.)
Lent by The Metropolitan Museum of Art, Gift of John Goldsmith Phillips, 1940 (40.102.9)



Cat. No. 42
Victor Prevost
The Woodlawn Hotel, Bronx, 1853 - 1854
waxed-paper negative
image: 25.4 × 31.12 cm (10 × 12 1/4 in.)
Museum of the City of New York, Gift of Mrs. Alec N. Thompson, 1956

:

Cat. No. 43

Josiah Johnson Hawes

Winter on the Common, 1850s

salted paper print

overall: 18.5 × 23.6 cm (7 5/16 × 9 5/16 in.)

Collection of William L. Schaeffer

Cat. No. 44

Silas A. Holmes

Palisades, Hudson River, Yonkers Docks, c. 1855

salted paper print

image: 29.21 × 38.58 cm (11 1/2 × 15 3/16 in.)

mount: 40 × 47.3 cm (15 3/4 × 18 5/8 in.)

The J. Paul Getty Museum, Los Angeles

Digital image courtesy of the Getty's Open Content Program

Cat. No. 45

James Wallace Black

Winnepiseogee Lake, 1854

salted paper print

overall: 21.51 × 30.64 cm (8 7/16 × 12 1/16 in.)

Harvard Art Museums / Fogg Museum, Transfer from the Fine Arts Library, Harvard University

Cat. No. 46

James Wallace Black

View in Willey Mts, 1854

salted paper print

overall: 24.3 × 29.7 cm (9 9/16 × 11 11/16 in.)

mount: 30 × 39 cm (11 13/16 × 15 3/8 in.)

Harvard Art Museums / Fogg Museum, Transfer from the Fine Arts Library, Harvard University

Cat. No. 47

Franklin White

Mount Jefferson after a Storm, 1858

salted paper print

Addison Gallery of American Art, Phillips Academy, Andover, Massachusetts, museum purchase.

Addison Gallery of American Art, Phillips Academy, Andover, MA / Art Resource, NY

Cat. No. 48

Franklin White

Snow Arch in Tuckerman's Ravine, 1858

salted paper print mounted on wove paper

framed: 43.18 × 53.34 × 2.54 cm (17 × 21 × 1 in.)

image: 14.29 × 16.03 cm (5 5/8 × 6 5/16 in.)

mount: 26.04 × 35.4 cm (10 1/4 × 13 15/16 in.)

Addison Gallery of American Art, Phillips Academy, Andover, Massachusetts, museum purchase.

:

Cat. No. 49
George Gardner Rockwood
Bethesda Terrace, Central Park, New York, c. 1862
albumen print
overall: 28.3 × 38.3 cm (11 1/8 × 15 1/16 in.)
support: 51.6 × 69.2 cm (20 5/16 × 27 1/4 in.)
Canadian Centre for Architecture, Montréal

Cat. No. 50
James E. McClees
Fairmount Water Works, 1855
salted paper print
overall: 15.9 × 22.5 cm (6 1/4 × 8 7/8 in.)
Smithsonian American Art Museum, Museum purchase from the Charles Isaacs Collection made possible in part by the Luisita L. and Franz H. Denghausen Endowment

Cat. No. 51
James E. McClees
Entrance to Woodlands Cemetery, 1858
salted paper print
overall: 24.77 × 33.97 cm (9 3/4 × 13 3/8 in.)
The Library Company of Philadelphia

Cat. No. 52
Charles Ehrmann and possibly James E. McClees
View near Philadelphia, mid-1850s
salted paper print
overall: 17.5 × 22.4 cm (6 7/8 × 8 13/16 in.)
Collection of William L. Schaeffer

Cat. No. 53
Frederick DeBourg Richards
The Hole in the Wall, 1859
salted paper print
unframed: 15.24 × 21.59 cm (6 × 8 1/2 in.)
mount: 40.64 × 50.8 cm (16 × 20 in.)
Black Dog Collection

Cat. No. 54
Frederick DeBourg Richards
Chew's House, Germantown, 1859
salted paper print
overall: 20.64 × 25.72 cm (8 1/8 × 10 1/8 in.)
The Library Company of Philadelphia

Cat. No. 55
Jay Dearborn Edwards
Bird's-Eye View of Garden District from Fire Tower, 1858-1861
salted paper print
image: 14.61 × 20 cm (5 3/4 × 7 7/8 in.)
The Historic New Orleans Collection

Cat. No. 56 / File Name: 3960-087.jpg
Jay Dearborn Edwards
Steamer Princess, 1858-1859
salted paper print
image: 15.88 × 20.64 cm (6 1/4 × 8 1/8 in.)
The Historic New Orleans Collection



Cat. No. 57
Jay Dearborn Edwards
Esplanade Street from Royal Street toward Lake, 1858-1861
salted paper print
image: 19.05 × 23.81 cm (7 1/2 × 9 3/8 in.)
The Historic New Orleans Collection

Cat. No. 58
Jay Dearborn Edwards
South Claiborne Avenue at Common Street, 1858-1861
salted paper print
image: 33 × 38.1 cm (13 × 15 in.)
The Historic New Orleans Collection

Cat. No. 59
Francis Hacker
Looking Northwest from Westminster Street, Providence, 1858-1860
salted paper print
image: 21.8 × 27.2 cm (8 9/16 × 10 11/16 in.)
mount: 32.4 × 37.8 cm (12 3/4 × 14 7/8 in.)
National Gallery of Art, Washington, Pepita Milmore Memorial Fund

Cat. No. 60
Joel E. Whitney
Fort Snelling, c. 1865
albumen print
image: 14.9 × 20.4 cm (5 7/8 × 8 1/16 in.)
National Gallery of Art, Washington, Clinton and Jean Wright Fund

Cat. No. 61

George Kendall Warren

Battery Knox, West Point, c. 1870

albumen print

image: 5 11/16 x 7 13/16 in. (14.4 x 19.8 cm), oval

mount: 9 13/16 x 13 3/4 in. (25 x 35 cm)

National Gallery of Art, Washington, Horace W. Goldsmith Foundation through Robert and Joyce Menschel

Cat. No. 63

George Kendall Warren

East Rock, New Haven, 1868

albumen print

mount: 25.4 x 32.39 cm (10 x 12 3/4 in.)

image: 14.61 x 20 cm (5 3/4 x 7 7/8 in.)

sheet: 14.61 x 20 cm (5 3/4 x 7 7/8 in.)

National Gallery of Art, Washington, Robert Menschel and the Vital Projects Fund

Cat. No. 64 / File Name: 3960-101.jpg

George Kendall Warren

From Trophy Point, West Point, Hudson River, c. 1867-1868

albumen print

mount: 24.77 x 32.39 cm (9 3/4 x 12 3/4 in.)

sheet: 17.15 x 22.23 cm (6 3/4 x 8 3/4 in.)

National Gallery of Art, Washington, Robert Menschel and the Vital Projects Fund



Cat. No. 65

John Moran

Head Waters of the Susquehanna, Cambria Co., Pa., c. 1862

stereoscopic albumen prints

overall: 8.57 x 17.46 cm (3 3/8 x 6 7/8 in.)

The Library Company of Philadelphia

Cat. No. 66 / File Name: 3960-238.jpg

John Moran

Rising Mist after Rain, Juniata River, c. 1862

stereoscopic albumen prints

overall: 8.26 x 17.46 cm (3 1/4 x 6 7/8 in.)

The Library Company of Philadelphia



Cat. No. 67

John Moran

View of Trees, 1862

albumen print

overall: 21.59 x 15.88 cm (8 1/2 x 6 1/4 in.)

The Library Company of Philadelphia

:

Cat. No. 68
John Moran
Sunset after Rain on the Allegheny Mountains, 1862
albumen print
overall: 23.5 × 16.19 cm (9 1/4 × 6 3/8 in.)
The Library Company of Philadelphia

Cat. No. 69
Bierstadt Brothers, Charles and Edward
Emerald Pool, from "Gems of American Scenery: Consisting of Stereoscopic Views among the White Mountains" (New York, 1878), 1878
bound volume
image: 9.1 × 15.7 cm (3 9/16 × 6 3/16 in.)
National Gallery of Art Library, Washington, Image Collections

Cat. No. 70 / File Name: 3960-233.jpg
Bierstadt Brothers, Charles and Edward
Rapids and Cascades, Franconia Notch, N.H., 1860s
carte-de-visite albumen print
image: 7.8 × 5.7 cm (3 1/16 × 2 1/4 in.)
mount: 10.1 × 6.2 cm (4 × 2 7/16 in.)
National Gallery of Art, Washington, Robert Menschel and the Vital Projects Fund



Cat. No. 71
Francis T. Fassitt and Eugene Borda
View of Lower Ramy's Kill Falls, from "Philadelphia Photographer 1, no. 5" (May 1864), 1864
albumen print in bound volume
image: 9.7 × 11.7 cm (3 13/16 × 4 5/8 in.)
Collection of William L. Schaeffer

Cat. No. 72 / File Name: 3960-064.jpg
Samuel Masury
View of Pride's Crossing, Beverly, Massachusetts, c. 1857-1859
salted paper print
overall: 26 × 34.6 cm (10 1/4 × 13 5/8 in.)
Lent by The Metropolitan Museum of Art, Gilman Collection, Museum Purchase, 2005 (2005.100.869)



Cat. No. 73 / File Name: 3960-066.jpg
Samuel Masury
View of the Loring Estate at Pride's Crossing, Beverly, Massachusetts, c. 1857-1859
salted paper print
image: 25.3 × 33.7 cm (9 15/16 × 13 1/4 in.)
Worcester Art Museum, Eliza S. Paine Fund



Cat. No. 74
John Frederick Kensett
Coast, Beverly, Massachusetts, c. 1860-1870
oil on canvas
unframed: 56.52 × 87 cm (22 1/4 × 34 1/4 in.)
Collection Albright-Knox Art Gallery, Buffalo, New York, Anonymous gift in memory of Samuel Ellis (1866-1929), 1980.

Cat. No. 75 / File Name: 3960-283.jpg
Asher B. Durand
Forest in the Morning Light, c. 1855
oil on canvas
overall: 61.5 × 46.2 cm (24 3/16 × 18 3/16 in.)
National Gallery of Art, Washington, Gift of Frederick Sturges, Jr.



Cat. No. 76
William James Stillman
Photographic Study, from "Photographic Studies by W.J. Stillman. Part I. The Forest. Adirondac Woods (1859).", 1859
albumen print
image: 19.21 × 14.45 cm (7 9/16 × 5 11/16 in.)
Amon Carter Museum of American Art, Fort Worth, Texas

Cat. No. 77
William James Stillman
Photographic Study, from "Photographic Studies by W.J. Stillman. Part I. The Forest. Adirondac Woods (1859).", 1859
albumen print
image: 7 11/16 × 5 9/16 in.; mount: 15 5/8 × 11 3/4 in.
Amon Carter Museum of American Art, Fort Worth, Texas

Cat. No. 78
John Moran
Blackberry Bushes, 1860s
albumen print
overall: 19.4 × 15 cm (7 5/8 × 5 7/8 in.)
Collection of William L. Schaeffer

Cat. No. 79 / File Name: 3960-050.jpg
John Moran
Broadhead's Creek, Delaware Water Gap, 1863
albumen print
image: 26.1 × 34 cm (10 1/4 × 13 3/8 in.)
mount: 46.9 × 66.3 cm (18 7/16 × 26 1/8 in.)
National Gallery of Art, Washington, Gift of John P. Coll, in memory of Margaret Canaga Coll and John Owen Reilly Coll, 2016



Cat. No. 80 / File Name: 3960-248.jpg

Thomas Moran

The Juniata, Evening, 1864

oil on canvas

overall: 50.8 x 76.2 cm (20 x 30 in.)

framed: 79.38 x 105.09 x 11.75 cm (31 1/4 x 41 3/8 x 4 5/8 in.)

National Gallery of Art, Washington, Gift of Max and Heidi Berry and Ann and Mark Kington /
The Kington Foundation



Cat. No. 81

John Moran

The Wissahickon Creek near Philadelphia, c. 1863

albumen print

overall: 26.7 x 34.9 cm (10 1/2 x 13 3/4 in.)

National Gallery of Art, Washington, Horace W. Goldsmith Foundation through Robert and Joyce
Menschel

Cat. No. 82 / File Name: 3960-060.jpg

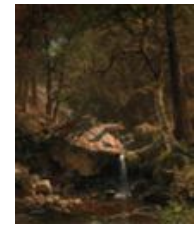
Albert Bierstadt

Mountain Brook, 1863

oil on canvas

44 x 36 in. (111.8 x 91.4 cm)

The Art Institute of Chicago, Restricted gift of Mrs. Herbert A. Vance; fund of an anonymous
donor; Wesley M. Dixon, Jr. Fund and Endowment; Henry Horner Straus and Frederick G. Wacker
endowments; through prior acquisitions of various donors, including Samuel P. Avery
Endowment, Mrs. George A. Carpenter, Frederick S. Colburn, Mr. and Mrs. Stanley Feinberg,
Field Museum of Natural History, Mr. and Mrs. Frank Harding, International Minerals and
Chemicals Corp., Mr. and Mrs. Ralph Loeff, Mrs. Frank C. Miller, Mahlan D. Moulds, Mrs. Clive
Runnells, Mr. and Mrs. Stanley Stone, and the Charles H. and Mary F.S. Worcester Collection.



Cat. No. 83

Bierstadt Brothers, Charles and Edward

Below the Flume Looking Down, Franconia Notch, New Hampshire, 1860

albumen print

image: 40.16 x 32.54 cm (15 13/16 x 12 13/16 in.)

mat: 60.96 x 50.8 cm (24 x 20 in.)

framed: 69.85 x 59.69 x 4.13 cm (27 1/2 x 23 1/2 x 1 5/8 in.)

The Nelson-Atkins Museum of Art, Kansas City, Missouri (Gift of Hallmark Cards, Inc.)
2005.27.541

Cat. No. 84

Bierstadt Brothers, Charles and Edward

Pool, Franconia Mountains, N.H., 1860

albumen print

overall: 25.5 x 20.5 cm (10 1/16 x 8 1/16 in.)

Collection of William L. Schaeffer

:

Cat. No. 85 / File Name: 3960-059.jpg
Bierstadt Brothers, Charles and Edward
The Cathedral, White Mountains, New Hampshire, c. 1860
albumen print
image: 20.64 × 15.56 cm (8 1/8 × 6 1/8 in.)
mat: 45.72 × 38.1 cm (18 × 15 in.)
framed: 48.58 × 40.96 × 2.22 cm (19 1/8 × 16 1/8 × 7/8 in.)
The Nelson-Atkins Museum of Art, Kansas City, Missouri (Gift of Hallmark Cards, Inc.)
2005.27.250



Cat. No. 86
Francis T. Fassitt
A Peep through the Arch, Wissahickon, 1862
stereoscopic albumen print
overall: 8.3 × 17.1 cm (3 1/4 × 6 3/4 in.)
Collection of William L. Schaeffer

Cat. No. 87
Nathan Weston Pease
On Mt. Washington Carriage Road—Looking Down, c. 1865
stereoscopic albumen print
image: 8.8 × 15.8 cm (3 7/16 × 6 1/4 in.)
Collection of Russell Norton

Cat. No. 88
John P. Soule
Mt. Chocorua and Lake, c. 1865
stereoscopic albumen print
image: 8.7 × 13.7 cm (3 7/16 × 5 3/8 in.)
Collection of Russell Norton

Cat. No. 89
Samuel A. Cooley
View in Georgia or South Carolina, 1860s
carte-de-visite albumen print
overall: 8.5 × 5.5 cm (3 3/8 × 2 3/16 in.)
Collection of William L. Schaeffer

Cat. No. 90
Adin F. Styles
Green Mountain Scenery, c. 1865-1871
carte-de-visite albumen print
image: 5.5 × 8.9 cm (2 3/16 × 3 1/2 in.)
Collection of William L. Schaeffer

:

Cat. No. 91
Rufus Morgan
Upper Catawaha Falls, c. 1870
stereoscopic albumen print
image: 8.7 × 16.4 cm (3 7/16 × 6 7/16 in.)
Collection of Russell Norton

Cat. No. 92
Rufus Morgan
Asheville from Beau Catcher, c. 1870
stereoscopic albumen print
image: 8.7 × 16.4 cm (3 7/16 × 6 7/16 in.)
Collection of Russell Norton

Cat. No. 93
Amos F. Clough
Flags among the Rocks, c. 1870
stereoscopic albumen print
image: 8.8 × 16.4 cm (3 7/16 × 6 7/16 in.)
Collection of Russell Norton

Cat. No. 94
James Mullen
The Mirror, Kentucky Scenery, c. 1865
stereoscopic albumen print
image: 8.7 × 16.3 cm (3 7/16 × 6 7/16 in.)
Collection of Russell Norton

Cat. No. 95
David B. Woodbury
Military Bridge, across the Chickahominy, from "Gardener's Photographic Sketch Book of the War" (Washington, 1866), 1862, printed 1866
albumen print
image: 17.8 × 22.9 cm (7 × 9 in.)
National Gallery of Canada, Ottawa. Gift of Phyllis Lambert, Montreal, 1975

Cat. No. 96
Andrew J. Russell
New Bridge over Potomac River, 1863-1865
albumen print
image: 22.07 × 30.16 cm (8 11/16 × 11 7/8 in.)
Prints and Photographs Division, Library of Congress, Washington D.C.

Cat. No. 97
American 19th Century
Levee at Fort Prentiss, Cairo, Illinois, Ohio River and Mississippi River, c. 1861
salted paper print
image: 17.62 × 21.59 cm (6 15/16 × 8 1/2 in.)
Prints and Photographs Division, Library of Congress, Washington D.C.

Cat. No. 98

Attributed to Henry P. Moore

Long Dock at Hilton Head, Port Royal, South Carolina, 1862 or 1863

salted paper print

unframed: 18.1 × 22.86 cm (7 1/8 × 9 in.)

Smithsonian American Art Museum, Museum purchase from the Charles Isaacs Collection made possible in part by the Luisita L. and Franz H. Denghausen Endowment

Cat. No. 99

George N. Barnard

Pass in the Raccoon Range, Whiteside, No. 1, from "Photographic Views of Sherman's Campaign" (New York, 1866), 1864

albumen print, printed 1866

image: 25.6 × 35.8 cm (10 1/16 × 14 1/8 in.)

National Gallery of Canada, Ottawa. Purchased 1975

Cat. No. 100

Timothy H. O'Sullivan

High Bridge Crossing the Appomattox, near Farmville, on South Side Railroad, Virginia, from "Gardner's Photographic Sketch Book of the War" (Washington, 1866), 1865

albumen print, printed by Alexander Gardner, 1866

image: 17.4 × 22.4 cm (6 7/8 × 8 13/16 in.)

National Gallery of Canada, Ottawa. Gift of Phyllis Lambert, Montreal, 1975

Cat. No. 101

Timothy H. O'Sullivan

Pontoon Bridge across the Rappahannock, from "Gardner's Sketchbook of the Civil War", 1863

albumen print, printed 1866

image: 17.8 × 22.9 cm (7 × 9 in.)

National Gallery of Canada, Ottawa. Gift of Phyllis Lambert, Montreal, 1975

Cat. No. 102 / File Name: 3960-222.jpg

Andrew J. Russell

Aqueduct Bridge, Georgetown, DC, 1863-1865

albumen print

image: 28.58 × 40.64 cm (11 1/4 × 16 in.)

Prints and Photographs Division, Library of Congress, Washington D.C.



Cat. No. 103

Andrew J. Russell

Government Hay Barns, 1863

albumen print

image: 30.48 × 40.64 cm (12 × 16 in.)

Prints and Photographs Division, Library of Congress, Washington D.C.

:

Cat. No. 104 / File Name: 3960-275.jpg
Andrew J. Russell
Rebel Rifle Pits, Bull Run, 1863
albumen print
unframed: 30.48 × 40.64 cm (12 × 16 in.)
Stephen G. Stein Employee Benefit Trust



Cat. No. 105
Attributed to Egbert Guy Fowx
Dutch Gap Canal, 1865
albumen print
image: 14.6 × 20 cm (5 3/4 × 7 7/8 in.)
Chrysler Museum of Art, Norfolk, Virginia, Museum purchase

Cat. No. 106
Isaac H. Bonsall
Lulah Falls, Lookout Mountain, Georgia, 1863-1865
albumen print
image: 8 3/8 × 10 1/2 in. (21.2 × 26.6 cm)
Lent by The Metropolitan Museum of Art, Purchase, Celia Tompkins Hegyi Gift, 2007 (2007.392)

Cat. No. 107 / File Name: 3960-131.jpg
Isaac H. Bonsall
Chattanooga, Tennessee, from Lookout Mountain, 1863-1865
albumen print
unframed: 26.04 × 33.66 cm (10 1/4 × 13 1/4 in.)
Collection of Paul Sack



Cat. No. 108
John Moran
View from the Observatory, Mower Army Hospital, 1863
albumen print
overall: 22.86 × 30.48 cm (9 × 12 in.)
The Library Company of Philadelphia

Cat. No. 109
John Moran
From the Observatory looking Southeast, Mower Army Hospital, 1863
albumen print
overall: 22.86 × 30.16 cm (9 × 11 7/8 in.)
The Library Company of Philadelphia

Cat. No. 110
John Moran
Guard House and Lecture Room, Mower Army Hospital, 1863
albumen print
overall: 22.86 × 30.16 cm (9 × 11 7/8 in.)
The Library Company of Philadelphia

:

Cat. No. 111
John Moran
From the Observatory looking Southwest, Mower Army Hospital, 1863
albumen print
overall: 22.86 × 30.16 cm (9 × 11 7/8 in.)
The Library Company of Philadelphia

Cat. No. 112
George N. Barnard
Savannah River near Savannah, Georgia, from "Photographic Views of Sherman's Campaign" (New York, 1866), 1866
albumen print
overall: 25.56 × 35.88 cm (10 1/16 × 14 1/8 in.)
The Museum of Modern Art, New York. Acquired by exchange with the Library of Congress

Cat. No. 113
George N. Barnard
Lu-La Lake, Lookout Mountain, from "Photographic Views of Sherman's Campaign" (New York, 1866), 1864 or 1866
albumen print
overall: 25.56 × 35.88 cm (10 1/16 × 14 1/8 in.)
The Museum of Modern Art, New York. Acquired by exchange with the Library of Congress

Cat. No. 114
George N. Barnard
Battle Field of New Hope Church, Ga., No. 2, from "Photographic Views of Sherman's Campaign" (New York, 1866), 1866
albumen print
overall: 25.56 × 35.88 cm (10 1/16 × 14 1/8 in.)
The Museum of Modern Art, New York. Acquired by exchange with the Library of Congress

Cat. No. 115 / File Name: 3960-116.jpg
George N. Barnard
Battle Ground of Resacca, Ga., No. 2, from "Photographic Views of Sherman's Campaign" (New York, 1866), 1866
albumen print
overall: 25.56 × 35.88 cm (10 1/16 × 14 1/8 in.)
The Museum of Modern Art, New York. Acquired by exchange with the Library of Congress



Cat. No. 116
E. and H.T. Anthony and Company
Mills on the East Side of the Bridge: Logs Carried over the Dam in the Foreground, c. 1870
stereoscopic albumen prints
image: 8.6 × 16.3 cm (3 3/8 × 6 7/16 in.)
Collection of Russell Norton

:

Cat. No. 117
E. and H.T. Anthony and Company
Outlet of Erie Canal, Rollway Mountain in the Distance, c. 1870
stereoscopic albumen prints
image: 8.5 × 16.4 cm (3 3/8 × 6 7/16 in.)
Collection of Russell Norton

Cat. No. 118
Bryant Bradley
Green Mountain Railway, Mt. Desert, Me., c. 1883
stereoscopic albumen prints
image: 11.4 × 16.9 cm (4 1/2 × 6 5/8 in.)
Collection of Russell Norton

Cat. No. 119
James A. Jenney
Camp at Noon at L.B. Curtis & Co's, c. 1872
stereoscopic albumen prints
image: 9.4 × 16.5 cm (3 11/16 × 6 1/2 in.)
Collection of Russell Norton

Cat. No. 120
E. and H.T. Anthony and Company
Silicate Mine - Passaic Zinc Works, c. 1870
stereoscopic albumen prints
image: 9 × 16.5 cm (3 9/16 × 6 1/2 in.)
Collection of Russell Norton

Cat. No. 121
Daniel Bendann
Mount Washington (Looking East), c. 1875
albumen print
overall: 15.2 × 20.6 cm (6 × 8 1/8 in.)
Collection of William L. Schaeffer

Cat. No. 122
American 19th Century
Flood, Rochester, New York, c. 1868
albumen silver print from a glass-plate negative
diameter: 23.81 cm (9 3/8 in.)
The Museum of Modern Art, New York. Purchase

Cat. No. 123
Frederick Gutekunst
Dam and Saw Mill from the Canal, from "Views of the Buildings Belonging to the Tallasse Manufacturing Company, No. 1, at Tallasse, Elmore County, Alabama, with Surrounding Scenery", c. 1880
albumen print in bound volume
overall: 44.45 × 55.88 cm (17 1/2 × 22 in.)
page size: 43.18 × 53.98 cm (17 × 21 1/4 in.)
image: 31.12 × 41.59 cm (12 1/4 × 16 3/8 in.)
Daniel Wolf, Inc.

Cat. No. 124
Henry Peter Bosse
19th St Rock Island Ill during High Water, 1888
cyanotype
unframed: 26.5 × 33.2 cm (10 7/16 × 13 1/16 in.)
mount: 50.8 × 60.96 cm (20 × 24 in.)
Black Dog Collection

Cat. No. 125
Attributed to Lewis Emory Walker
Construction of Washington Aqueduct, 1858-1859
salted paper print
image: 27.4 × 43.2 cm (10 13/16 × 17 in.)
National Gallery of Art, Washington, Pepita Milmore Memorial Fund

Cat. No. 126
Thomas H. Johnson
Waymart, c. 1863-1865
albumen print
image: 30.6 × 40.9 cm (12 1/16 × 16 1/8 in.)
overall: 45.72 × 55.88 cm (18 × 22 in.)
National Gallery of Art, Washington, Alfred H. Moses and Fern M. Schad Fund

Cat. No. 127 / File Name: 3960-219.jpg
Thomas H. Johnson
Inclined Plane G, c. 1863-1865
albumen print
unframed: 30.48 × 38.74 cm (12 × 15 1/4 in.)
mount: 45.72 × 55.88 cm (18 × 22 in.)
Collection of Michael Mattis and Judith Hochberg



Cat. No. 128
Thomas H. Johnson
Von Storch Shaft, c. 1863-1865
albumen print
image: 30.64 × 40.8 cm (12 1/16 × 16 1/16 in.)
mount: 44.29 × 55.72 cm (17 7/16 × 21 15/16 in.)
National Gallery of Art, Washington, Alfred H. Moses and Fern M. Schad Fund

Cat. No. 129

Thomas H. Johnson

Von Storch Breaker, c. 1863-1865

albumen print

image: 30.64 × 40.48 cm (12 1/16 × 15 15/16 in.)

mount: 44.29 × 53.18 cm (17 7/16 × 20 15/16 in.)

National Gallery of Art, Washington, Alfred H. Moses and Fern M. Schad Fund

Cat. No. 130 / File Name: 3960-221.jpg

James F. Ryder

Atlantic & Great Western Railway, 1862

albumen print

overall: 18.9 × 23.5 cm (7 7/16 × 9 1/4 in.)

Collection of William L. Schaeffer



Cat. No. 131 / File Name: 3960-097.jpg

James F. Ryder

Atlantic & Great Western Railway, 1862

albumen print

image: 18.7 × 23.5 cm (7 3/8 × 9 1/4 in.)

sheet: 25.5 × 32.8 cm (10 1/16 × 12 15/16 in.)

National Gallery of Art, Washington, Gift of Mary and Dan Solomon and Patrons' Permanent Fund



Cat. No. 132 / File Name: 3960-096.jpg

James F. Ryder

Atlantic & Great Western Railway, 1862

albumen print

image: 18.7 × 23.5 cm (7 3/8 × 9 1/4 in.)

sheet: 25.8 × 32.7 cm (10 3/16 × 12 7/8 in.)

National Gallery of Art, Washington, Gift of Mary and Dan Solomon and Patrons' Permanent Fund



Cat. No. 133 / File Name: 3960-099.jpg

James F. Ryder

Atlantic & Great Western Railway, 1862

albumen print

overall: 18.8 × 23.6 cm (7 3/8 × 9 5/16 in.)

Collection of William L. Schaeffer



Cat. No. 134

John A. Mather

David Beatey Farm, Looking South from Saw Mill, West Hickory Creek, Pennsylvania, c. 1868

albumen print

image: 26.19 × 34.61 cm (10 5/16 × 13 5/8 in.)

mat: 45.72 × 55.88 cm (18 × 22 in.)

framed: 54.61 × 64.77 × 4.13 cm (21 1/2 × 25 1/2 × 1 5/8 in.)

The Nelson-Atkins Museum of Art, Kansas City, Missouri (Gift of Hallmark Cards, Inc.)

2005.27.502

:

Cat. No. 136

William Henry Jackson and Company

High Bridge, Harlem River of the New York Central and Hudson River Railroad, c. 1890

albumen print

overall: 42.8 × 95.4 cm (16 7/8 × 37 9/16 in.)

George Eastman Museum, gift of Harvard University

Cat. No. 137

William Henry Jackson and Company

Valley of the Mohawk East of Little Falls, c. 1890

albumen print

overall: 42.7 × 54 cm (16 13/16 × 21 1/4 in.)

George Eastman Museum, gift of Harvard University

Cat. No. 138

William Henry Jackson and Company

Mirror Lake and Lake Placid Adirondack Mountains, c. 1890

albumen print

overall: 42.7 × 53.8 cm (16 13/16 × 21 3/16 in.)

George Eastman Museum, gift of Harvard University

Cat. No. 141

William H. Rau

Union Station, Pittsburgh, Pennsylvania Rail Road, c. 1891

albumen print

overall: 53.98 × 62.23 cm (21 1/4 × 24 1/2 in.)

image: 44.13 × 52.07 cm (17 3/8 × 20 1/2 in.)

American Premier Underwriters, Inc.

Cat. No. 142

William H. Rau

Valley, Showing Marks of Flood, East from Deep Cut, Pennsylvania Rail Road, c. 1891

albumen print

overall: 53.98 × 62.87 cm (21 1/4 × 24 3/4 in.)

image: 43.82 × 52.07 cm (17 1/4 × 20 1/2 in.)

American Premier Underwriters, Inc.

Cat. No. 143

William H. Rau

Delaware River at Manunka Chunk, Pennsylvania Rail Road, c. 1893

albumen print

overall: 54.93 × 63.82 cm (21 5/8 × 25 1/8 in.)

image: 44.77 × 53.34 cm (17 5/8 × 21 in.)

American Premier Underwriters, Inc.

Cat. No. 144
William H. Rau
Pennsylvania Canal, at Bailey's, Pennsylvania Rail Road, c. 1891
albumen print
overall: 53.98 × 62.23 cm (21 1/4 × 24 1/2 in.)
image: 44.13 × 52.07 cm (17 3/8 × 20 1/2 in.)
American Premier Underwriters, Inc.

Cat. No. 145
Henry Peter Bosse
Mechanic's Rock, L.W., 1889
cyanotype
image: 26.51 × 33.18 cm (10 7/16 × 13 1/16 in.)
sheet: 36.83 × 43.66 cm (14 1/2 × 17 3/16 in.)
The J. Paul Getty Museum, Los Angeles

Cat. No. 146
Henry Peter Bosse
Old Ponton Bridge at Prairie du Chien, Wis, 1885
cyanotype
overall: 26.5 × 33.3 cm (10 7/16 × 13 1/8 in.)
Lent by The Metropolitan Museum of Art, Gift of Charles Wehrenberg and Sally Larsen, 2014
(2014.715.14)

Cat. No. 147
Henry Peter Bosse
From Bluff at Franklin's Coulee Looking Down Stream, 1891
cyanotype
unframed: 26.67 × 34.29 cm (10 1/2 × 13 1/2 in.)
mount: 50.8 × 60.96 cm (20 × 24 in.)
Black Dog Collection

Cat. No. 148 / File Name: 3960-241.jpg
Henry Peter Bosse
Draw Span of C. & N. W. R. R. Bridge at Clinton, Ia, 1885
cyanotype
sheet: 36.8 × 43.7 cm (14 1/2 × 17 3/16 in.)
overall: 26.5 × 33.2 cm (10 7/16 × 13 1/16 in.)
Lent by The Metropolitan Museum of Art, Gift of Charles Wehrenberg and Sally Larsen, 2014
(2014.715.15)



Cat. No. 149
Henry Peter Bosse
Richtman's Quarry at Fountain City, Wis, 1891
cyanotype
image: 26.51 × 33.34 cm (10 7/16 × 13 1/8 in.)
sheet: 36.67 × 43.82 cm (14 7/16 × 17 1/4 in.)
The J. Paul Getty Museum, Los Angeles

:

Cat. No. 150 / File Name: 3960-138.jpg

Henry Peter Bosse

Construction of Rock and Brush Dam, L.W., 1891

cyanotype

image: 26.51 x 33.34 cm (10 7/16 x 13 1/8 in.)

sheet: 36.83 x 43.82 cm (14 1/2 x 17 1/4 in.)

National Gallery of Art, Washington, Gift of Mary and Dan Solomon



Cat. No. 151

William Henry Jackson and Company

Mississippi River at Natchez, Mississippi, c. 1890

albumen print

overall: 43 x 96 cm (16 15/16 x 37 13/16 in.)

George Eastman Museum, gift of Harvard University

Cat. No. 152

William James Stillman

Beaver Brook, from "Poetic Localities of Cambridge" (Boston, 1876), 1874

book

overall: 25.08 x 20 x 1.59 cm (9 7/8 x 7 7/8 x 5/8 in.)

image: 16.2 x 16.2 cm (6 3/8 x 6 3/8 in.)

Private Collection

Cat. No. 153

George Barker

Disfigured Banks: Repulsive Scenery around Visitor Approaching Goat Island Bridge for First View of Rapids, from "Special Report of New York State Survey on the Preservation of the Scenery of Niagara Falls" (Albany, 1880), 1880

heliotype

overall: 9.8 x 17.1 cm (3 7/8 x 6 3/4 in.)

National Gallery of Art Library, Washington, Image Collections

Cat. No. 154

Seneca Ray Stoddard

Sunset from Wells House, Schroon Lake, c. 1880

stereoscopic albumen print

image: 10.5 x 16 cm (4 1/8 x 6 5/16 in.)

Collection of Russell Norton

Cat. No. 155

Henry Hamilton Bennett

A Day at Light House—Sentinel's Head from Stairway, c. 1880

stereoscopic albumen prints

mount: 8.73 x 17.62 cm (3 7/16 x 6 15/16 in.)

print (each): 7.94 x 7.46 cm (3 1/8 x 2 15/16 in.)

Daniel Wolf, Inc.

Cat. No. 156
J. W. Stewart
Strong's near McMillan's Ferry, 1880s
albumen print
overall: 18.1 × 23.5 cm (7 1/8 × 9 1/4 in.)
Collection of William L. Schaeffer

Cat. No. 157
American 19th Century
View of Farm, 1870s-1880s
tintype
unframed: 17.46 × 23.18 cm (6 7/8 × 9 1/8 in.)
Collection of W. Bruce and Delaney H. Lundberg

Cat. No. 158
American 19th Century
View of Farm, 1870s-1880s
tintype
overall: 25.4 × 30.3 cm (10 × 11 15/16 in.)
Collection of William L. Schaeffer

Cat. No. 159 / File Name: 3960-280.jpg
American 19th Century
Album Related to the Photographic Society of Philadelphia, c. 1874-1886
albumen prints and cyanotypes
open: 27.94 × 42.07 cm (11 × 16 9/16 in.)
Collection of William L. Schaeffer



Cat. No. 160
Frederick DeBourg Richards
Seascape, c. 1885-1890
cyanotype
overall: 6 × 19.1 cm (2 3/8 × 7 1/2 in.)
Philadelphia Museum of Art, Gift of Harvey S. Shipley Miller and J. Randall Plummer, 2004

Cat. No. 161 / File Name: 3960-201.jpg
George Barker
Niagara Falls, 1886
albumen print
image: 53.66 × 44.61 cm (21 1/8 × 17 9/16 in.)
mat: 76.2 × 60.96 cm (30 × 24 in.)
framed: 85.09 × 69.85 × 4.13 cm (33 1/2 × 27 1/2 × 1 5/8 in.)
The Nelson-Atkins Museum of Art, Kansas City, Missouri (Gift of Hallmark Cards, Inc.)
2005.27.3503



:

Cat. No. 162

Charles Bierstadt

The Rapids, Below the Suspension Bridge, c. 1883

albumen print

sheet: 17.78 × 23.5 cm (7 × 9 1/4 in.)

Smithsonian American Art Museum, Museum purchase from the Charles Isaacs Collection made possible in part by the Luisita L. and Franz H. Denghausen Endowment

Cat. No. 163

George Barker

Silver Springs, Florida, c. 1886

albumen print

image: 45.4 × 54.93 cm (17 7/8 × 21 5/8 in.)

mat: 63.5 × 76.2 cm (25 × 30 in.)

Daniel Wolf, Inc.

Cat. No. 164

Seneca Ray Stoddard

Cascade Lake, Adirondacks, 1870s-1880s

albumen print

image: 25.1 × 40.7 cm (9 7/8 × 16 in.)

National Gallery of Art, Washington, The Diana and Mallory Walker Fund and Veverka Family Foundation Fund

Cat. No. 165

Seneca Ray Stoddard

Marion River at Bassett's Camp, c. 1870s

albumen print

image: 11 × 18.5 cm (4 5/16 × 7 5/16 in.)

National Gallery of Art, Washington, Robert Menschel and the Vital Projects Fund

Cat. No. 166

Seneca Ray Stoddard

Ausable Chasm - Up the River from Table Rock, c. 1880

albumen print

image: 33.8 × 25.8 cm (13 5/16 × 10 3/16 in.)

mount: 35.1 × 27.8 cm (13 13/16 × 10 15/16 in.)

National Gallery of Art, Washington, Veverka Family Foundation Fund

Cat. No. 167 / File Name: 3960-159.jpg

Seneca Ray Stoddard

Drowned Lands of the Lower Raquette, Adirondacks, c. 1888

albumen print

image: 36.67 × 47.63 cm (14 7/16 × 18 3/4 in.)

Prints and Photographs Division, Library of Congress, Washington D.C.



:

Cat. No. 168 / File Name: 3960-160.jpg

Seneca Ray Stoddard

Avalanche Lake, Adirondacks, c. 1888

albumen print

image: 37.15 × 47.63 cm (14 5/8 × 18 3/4 in.)

Prints and Photographs Division, Library of Congress, Washington D.C.



Cat. No. 169

Henry Hamilton Bennett

North Side of Giant's Castle, c. 1885

albumen print

overall: 43 × 54 cm (16 15/16 × 21 1/4 in.)

George Eastman Museum, purchase

Cat. No. 170 / File Name: 3960-232.jpg

Henry Hamilton Bennett

Wisconsin Dells, c. 1885

albumen print

unframed: 30.48 × 55.56 cm (12 × 21 7/8 in.)

mount: 35.56 × 59.69 cm (14 × 23 1/2 in.)

Collection of Michael Mattis and Judith Hochberg



Cat. No. 171

David W. Butterfield

New England Houses, 1870s-1880s

albumen print

16 1/4 in. × 20 5/16 in. (41.3 cm × 51.6 cm)

Sack Photographic Trust for the San Francisco Museum of Modern Art

Cat. No. 172

Edward H. Fox

On Clear Fork, Rugby, Tennessee, 1880s

albumen print

overall: 13.5 × 19.1 cm (5 5/16 × 7 1/2 in.)

Collection of William L. Schaeffer

Cat. No. 173

George Bacon Wood Jr.

***Entrance Drive and Statuary, at Estate of George W. Carpenter, "Phil-Ellena,"
Germantown, Pennsylvania, 1888***

platinum print

overall: 14.8 × 20.3 cm (5 13/16 × 8 in.)

Canadian Centre for Architecture, Montréal

:

Cat. No. 174

Arthur Wesley Dow

Haystacks, Ipswich, c. 1894

platinum print

image: 12.1 x 17.2 cm (4 3/4 x 6 3/4 in.)

sheet: 15.6 x 20.8 cm (6 1/8 x 8 3/16 in.)

National Gallery of Art, Washington, Diana and Mallory Walker Fund

Cat. No. 175

Edward Steichen

Woods Twilight, 1898

platinum print

image: 15.2 x 20.1 cm (6 x 7 15/16 in.)

Lent by The Metropolitan Museum of Art, Alfred Stieglitz Collection, 1933 (33.43.14)

Image (C) The Metropolitan Museum of Art. Image source: Art Resource, NY. © 2016 The Estate of Edward Steichen / Artists Rights Society (ARS), New York

Cat. No. 176

Alfred Stieglitz

An Icy Night, 1898

carbon print

image: 25.2 x 33.6 cm (9 15/16 x 13 1/4 in.)

sheet: 26.2 x 34.6 cm (10 5/16 x 13 5/8 in.)

National Gallery of Art, Washington, Alfred Stieglitz Collection