

National Gallery of Art

NEWS RELEASE

FOR IMMEDIATE RELEASE:
May 14, 2001

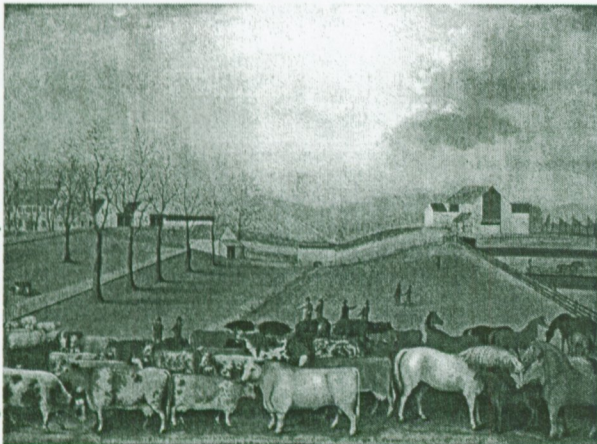
Deborah Ziska
Press and Public Information Officer

Publicist:
Lisa Knapp, (202) 842-6804
l-knapp@nga.gov

AMERICAN NAIVE PAINTINGS FROM THE EDGAR WILLIAM AND BERNICE CHRYSLER GARBISCH COLLECTION

Washington, D.C. – On June 3, 2001, the National Gallery of Art will open American Naive Paintings, an installation of 50 works from the Gallery's Edgar William and Bernice Chrysler Garbisch collection, one of the most important collections of American Naive paintings. The works, which were painted in the 18th and 19th centuries by artists who had little or no academic art training, are vivid records of many aspects of America's past and include portraits, landscapes, still lifes, and depictions of everyday life and religious and historic events.

Edward Hicks, *The Cornell Farm*, 1848
National Gallery of Art, Washington, Gift of
Edgar William and Bernice Chrysler Garbisch



The installation is on view at the National Gallery of Art the West Building, ground floor central galleries beginning June 3, 2001. It opens simultaneously with Jasper Johns: Prints from Four Decades and The Unfinished Print, which will be on view during the same period in adjacent galleries.

"The paintings in the Garbisch collection have long been appreciated as wonderfully appealing works of art and are indeed a favorite among the Gallery's visitors," said Earl A. Powell III, director, National Gallery of Art.

Works by the greatest names in American folk art are featured in the exhibition, including Erastus Salisbury Field, Edward Hicks, Joshua Johnson, Ammi Phillips, and William Matthew Prior. Painting as itinerants or in small workshops, these artists boldly and inventively conveyed the reality of the people, places, and ideas that they knew. Although most of these painters were not financially successful, the sustained length of their careers and their apparent productivity indicate that they had an appreciative contemporary audience.

- more -

Portraits in the exhibition range from the Gansevoort Limner's charming Dutch colonial likeness of young Susanna Truax (1730) in her brilliantly striped dress, to Field's image of pride and protectiveness, Mrs. Paul Smith Palmer and Her Twins (1835/1838) to Horace Bundy's intense and commanding Vermont Lawyer (1841).

Just as portraits served as objects of record and remembrance, landscapes were often created as documents of achievement and station in life. A very early example, Ralph Wheelock's Farm (c. 1822) by Francis Alexander, depicts industrious workers scattered across expanses of green field. Hick's The Cornell Farm (1848) is a lyrical depiction of the peace and harmony of agricultural life.

Still lifes were also featured in the work of early American painters and used as decoration in the home. In Melons and Grapes (mid-19th century) by Chipman, the artist's attempt at perspective has created the illusion that the fruit is slipping toward the viewer.

Other highlights in the exhibition include such canonical works as Hick's Peaceable Kingdom (c. 1834) and such whimsical and well-known paintings as The Cat (mid-to-late 19th century) and General Washington on a White Charger (1835 or later), both by unknown artists.

EDGAR WILLIAM AND BERNICE CHRYSLER GARBISCH

Edgar William Garbisch (1899–1979) and Bernice Chrysler Garbisch (1908–1979) collected choice American art and antiques to decorate the hunting lodge they inherited in 1941 on Maryland's Eastern Shore. Collecting at a time when interest in folk art was limited to a small circle of enthusiasts, the couple was able to obtain extraordinary works. Beginning in 1953 and ending with the bequest of 1980, the Garbisches donated more than 300 paintings and about 100 works on paper to the National Gallery of Art. Twenty-two other institutions have benefited from the Garbisches' generosity, including the Metropolitan Museum of Art and the Philadelphia Museum of Art.

NATIONAL GALLERY INFORMATION

The National Gallery of Art and its Sculpture Garden, located on the National Mall between Third and Ninth Streets at Constitution Avenue, NW, are open Monday through Saturday from 10 a.m. to 5 p.m. and Sunday from 11 a.m. to 6 p.m. The Sculpture Garden is open until 7 p.m. daily from Memorial Day through Labor Day. Admission is free. For general information, call (202) 737-4215; call the Telecommunications Device for the Deaf (TDD) at (202) 842-6176; or visit the Gallery's Web site at www.nga.gov. To receive the Gallery's free bimonthly Calendar of Events, call (202) 842-6662 or e-mail calendar@nga.gov.

#

National Gallery of Art

Washington, D.C.

American Naïve Paintings from the Edgar William and Bernice Chrysler Garbisch Collection

Checklist

National Gallery of Art 3 June 2001 (indefinitely)

- ◇ J-peg image available
- Slide available

1. Francis Alexander
American, 1800–1880
Ralph Wheelock's Farm, c. 1822
oil on canvas
Gift of Edgar William and Bernice Chrysler Garbisch, 1965
2. John Bradley
American, active 1831/1847
Little Girl in Lavender, c. 1840
oil on canvas
Gift of Edgar William and Bernice Chrysler Garbisch, 1958
3. Horace Bundy
American, 1814–1883
Vermont Lawyer, 1841
oil on canvas
Gift of Edgar William and Bernice Chrysler Garbisch, 1953
4. Thomas Chambers
◇ American, 1808–1866 or later
● *The Connecticut Valley*, mid-nineteenth century
oil on canvas, mid-nineteenth century
Gift of Edgar William and Bernice Chrysler Garbisch, 1956
5. Thomas Chambers
American, 1808–1866 or later
Lake George and the Village of Caldwell, mid-nineteenth century
oil on canvas
Gift of Edgar William and Bernice Chrysler Garbisch, 1966
6. Thomas Chambers
American, 1808–1866 or later
Packet Ship Passing Castle Williams, New York Harbor, mid-nineteenth century
oil on canvas
Gift of Edgar William and Bernice Chrysler Garbisch, 1980
7. Chipman
American, active mid-nineteenth century
Melons and Grapes, mid-nineteenth century
oil on canvas
Gift of Edgar William and Bernice Chrysler Garbisch, 1957

8. The Denison Limner (probably Joseph Steward)
American, 1753–1822
Captain Elisha Denison, c. 1790
oil on canvas
Gift of Edgar William and Bernice Chrysler Garbisch, 1980
9. The Denison Limner (probably Joseph Steward)
American, 1753–1822
Mrs. Elizabeth Noyes Denison, c. 1790
oil on canvas
Gift of Edgar William and Bernice Chrysler Garbisch, 1980
10. The Denison Limner (probably Joseph Steward)
American, 1753–1822
Miss Denison of Stonington, Connecticut (possibly Matilda Denison), c. 1790
oil on canvas
Gift of Edgar William and Bernice Chrysler Garbisch, 1980
11. Attributed to Gerardus Duyckinck
American, 1695–1746
Lady Undressing for a Bath, c. 1730/1740
oil on canvas
Gift of Edgar William and Bernice Chrysler Garbisch, 1956
12. Erastus Rastus Salisbury Field
American, 1805–1900
Paul Smith Palmer, 1835/1838
oil on canvas
Gift of Edgar William and Bernice Chrysler Garbisch, 1971
13. Erastus Rastus Salisbury Field
◇ American, 1805–1900
● *Mrs. Paul Smith Palmer and Her Twins*, 1835/1838
oil on canvas
Gift of Edgar William and Bernice Chrysler Garbisch, 1971
14. Erastus Rastus Salisbury Field
American, 1805–1900
Leverett Pond, c. 1860/1880
oil on canvas
Gift of Edgar William and Bernice Chrysler Garbisch, 1978
15. Erastus Rastus Salisbury Field
American, 1805–1900
The Taj Mahal, c. 1860/1880
oil on canvas
Gift of Edgar William and Bernice Chrysler Garbisch, 1978
16. Erastus Rastus Salisbury Field
American, 1805–1900
Ark of the Covenant, c. 1865/1880
oil on canvas
Gift of Edgar William and Bernice Chrysler Garbisch, 1956

17. Erastus Rastus Salisbury Field
◇ American, 1805–1900
● *"He Turned Their Waters into Blood"*, c. 1865/1880
oil on canvas
Gift of Edgar William and Bernice Chrysler Garbisch, 1964
18. The Gansevoort Limner (possibly Pieter Vanderlyn)
◇ American, c. 1687–1778
● *Susanna Truax*, 1730
oil on bed ticking
Gift of Edgar William and Bernice Chrysler Garbisch, 1980
19. The Gansevoort Limner (possibly Pieter Vanderlyn)
American, c. 1687–1778
Young Lady with a Fan, 1737
oil on canvas
Gift of Edgar William and Bernice Chrysler Garbisch, 1980
20. Attributed to Daniel Hendrickson
American, 1723–1788
Catharine Hendrickson, c. 1770
oil on canvas
Gift of Edgar William and Bernice Chrysler Garbisch, 1953
21. Edward Hicks
American, 1780–1849
Peaceable Kingdom, c. 1834
oil on canvas
Gift of Edgar William and Bernice Chrysler Garbisch, 1980
22. Edward Hicks
American, 1780–1849
Penn's Treaty with the Indians, c. 1840/1844
oil on canvas,
Gift of Edgar William and Bernice Chrysler Garbisch, 1980
23. Edward Hicks
American, 1780–1849
The Grave of William Penn, c. 1847/1848
oil on canvas
Gift of Edgar William and Bernice Chrysler Garbisch, 1980
24. Edward Hicks
◇ American, 1780–1849
● *The Cornell Farm*, 1848
oil on canvas
Gift of Edgar William and Bernice Chrysler Garbisch, 1964
25. Charles C. Hofmann
American, c. 1820–1882
View of Benjamin Reber's Farm, 1872
oil on canvas
Gift of Edgar William and Bernice Chrysler Garbisch, 1955

26. Jurgan Frederick Hugel
◇ *American, 1809–1878*
● *Composite Harbor Scene with Castle, c.1875*
oil on canvas
Gift of Edgar William and Bernice Chrysler Garbisch, 1969
27. Joshua Johnson
American, born c. 1763, active 1796/1824
Family Group, c. 1800
oil on canvas
Gift of Edgar William and Bernice Chrysler Garbisch, 1980
28. Frederick W. Mayhew
American, 1785–1854
John Harrisson, c. 1823
oil on canvas
Gift of Edgar William and Bernice Chrysler Garbisch, 1980
29. Frederick W. Mayhew
American, 1785–1854
Mrs. John Harrisson and Daughter, c. 1823
oil on canvas
Gift of Edgar William and Bernice Chrysler Garbisch, 1980
30. Linton Park
◇ *American, 1826–1906*
● *Flax Scutching Bee, 1885*
oil on bed ticking
Gift of Edgar William and Bernice Chrysler Garbisch, 1953
31. Ammi Phillips
American, 1788–1865
Joseph Slade, 1816
oil on canvas
Gift of Edgar William and Bernice Chrysler Garbisch, 1953
32. Ammi Phillips
◇ *American, 1788–1865*
● *Alsa Slade, 1816*
oil on canvas
Gift of Edgar William and Bernice Chrysler Garbisch, 1953
33. Asahel Powers
American, 1813–1843
Mrs. William Sheldon (?), c. 1831
oil on wood
Gift of Edgar William and Bernice Chrysler Garbisch, 1953
34. William Matthew Prior
American, 1806–1873
Boy with Toy Horse and Wagon, c. 1845
oil on canvas
Gift of Edgar William and Bernice Chrysler Garbisch, 1953

35. William Matthew Prior
American, 1806–1873
The Burnish Sisters, 1854
oil on canvas
Gift of Edgar William and Bernice Chrysler Garbisch, 1980
36. Charles S. Raleigh
American, 1831–1925
Law of the Wild, 1881
oil on canvas
Gift of Edgar William and Bernice Chrysler Garbisch, 1971
37. C. F. Senior
American, active 1881 or later
The Sportsman's Dream, 1881 or later
oil on canvas
Gift of Edgar William and Bernice Chrysler Garbisch, 1980
38. Joseph Whiting Stock
American, 1815–1855
Baby in Wicker Basket, c. 1840
oil on canvas
Gift of Edgar William and Bernice Chrysler Garbisch, 1980
39. Joseph Whiting Stock
American, 1815–1855
Girl with Reticule and Rose, c. 1840
oil on canvas
Gift of Edgar William and Bernice Chrysler Garbisch, 1980
40. Joseph Whiting Stock
American, 1815–1855
Mary and Francis Wilcox, 1845
oil on canvas
Gift of Edgar William and Bernice Chrysler Garbisch, 1959
41. Susan Waters
◇ American, 1823–1900
● *Brothers*, c. 1845
oil on canvas
Gift of Edgar William and Bernice Chrysler Garbisch, 1956
42. Unknown
American, nineteenth century
Aurora, mid-nineteenth century
oil on wood
Gift of Edgar William and Bernice Chrysler Garbisch, 1957
43. Unknown
◇ American, nineteenth century
● *Bowl of Fruit*, c. 1830
oil on canvas
Gift of Edgar William and Bernice Chrysler Garbisch, 1980

44. Unknown
American, nineteenth century
The Cat, probably second half nineteenth century
oil on canvas
Gift of Edgar William and Bernice Chrysler Garbisch, 1980
45. Unknown
American, nineteenth century
The Dog, early twentieth century
oil on canvas
Gift of Edgar William and Bernice Chrysler Garbisch, 1957
46. Unknown
American, nineteenth century
Fruit and Flowers, mid-nineteenth century
oil on canvas
Gift of Edgar William and Bernice Chrysler Garbisch, 1966
47. Unknown
American, nineteenth century
Lexington Battle Monument, 1853 or later
oil on canvas
Gift of Edgar William and Bernice Chrysler Garbisch, 1953
48. Unknown
American, nineteenth century
The Sargent Family, 1800
oil on canvas
Gift of Edgar William and Bernice Chrysler Garbisch, 1953
49. Unknown
◇ American, eighteenth century
● *Dr. Philemon Tracy*, c. 1790
oil on paper mounted on board
Gift of Edgar William and Bernice Chrysler Garbisch, 1980
50. Unknown
American, nineteenth century
General Washington on a White Charger, 1835 or later
oil on wood
Gift of Edgar William and Bernice Chrysler Garbisch, 1955