

National Gallery of Art

NEWS RELEASE

Deborah Ziska,
Press and Public Information Officer

FOR IMMEDIATE RELEASE
November 16, 2001

CONTACT: (202) 842-6804
Lisa Knapp, Publicist, l-knapp@nga.gov

MORE THAN 300 MASTERPIECES FROM
HENRY FRANCIS DU PONT'S REMARKABLE "COLLECTION OF COLLECTIONS"
WILL BE ON VIEW AT THE NATIONAL GALLERY OF ART
MAY 5 THROUGH OCTOBER 6, 2002



WASHINGTON, D.C.—Winterthur, An American Country Estate located in Delaware's picturesque Brandywine Valley, is widely known for its museum, garden, and library. Open to the public since 1951, it displays Henry Francis du Pont's (1880–1969) magnificent collection of American decorative arts. In celebration of Winterthur's 50th anniversary, a selection of the rarest and most renowned objects from its collection will be installed in the first exhibition to travel in the museum's history. An American Vision: Henry Francis du Pont's Winterthur Museum will be on view at the National Gallery of Art, West Building, May 5 through October 6, 2002.

This installation will present more than 300 masterpieces from Winterthur's collection of 85,000 objects, including furniture, textiles, paintings, prints and drawings, ceramics, glass, and metalwork, all made or used in America between 1640 and 1860.

"The American past and its aesthetic genius were the passion of Henry Francis du Pont, whose taste shaped the world of American collecting and decorating throughout the 20th century," said Earl A. Powell III, director, National Gallery of Art. "We are grateful to DuPont for its generosity in helping to bring to Washington for the first time in Winterthur's history many of the finest masterpieces from its unparalleled collection."

SPONSORS

The exhibition is made possible by Louisa and Robert Duemling, and by DuPont, in celebration of its 200th anniversary.

"DuPont is honored to bring to the National Gallery such an important and renowned exhibition," said Charles O. Holliday, Jr., chairman and chief executive officer. "We do so in recognition of our company's 200th anniversary and the 50th anniversary of Winterthur. We are delighted to celebrate and share these important occasions with the public by bringing to the museum this stunning array of some of the preeminent examples of early decorative arts."

- more -

EXHIBITION ORGANIZATION

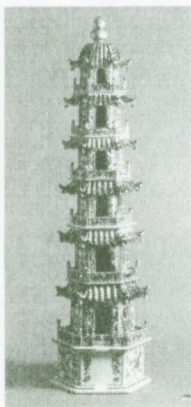
The exhibition will focus on major style periods and themes that mark Henry Francis du Pont's accomplishments as a collector. Several themes will run through each section, including documented works signed or labeled by their makers; English, European, and Asian sources of inspiration; and the uniquely American aspects of the works on view.



Early Settlement and Sophistication: The first gallery in the exhibition will explore the decorative arts of the earliest settlers in colonial America. Many of these works are reminiscent of mannerist and late Renaissance designs that were popular in England and the Netherlands at the time. The centerpiece of this section, an impressive 1680 court cupboard from Essex County, Massachusetts, will display fine examples of silver, pewter, and ceramic objects.



Passion for Rococo: The works in this section will include outstanding pieces created by mid-18th century artisans working in urban centers such as Philadelphia, Charleston, and Boston, in a style commonly called Chippendale after the English craftsman whose design books helped disseminate a taste for extravagant curves and ornamentation. A particular favorite of H. F. du Pont, objects in this style conveyed true status and beauty, often rivaling foreign products. A magnificent 1769 mahogany high chest, (8½ feet high, with gilded hardware) and the matching dressing table and chair made *en suite* for Michael and Miriam Gratz of Philadelphia will be on view, as will seven major paintings by preeminent American artists of the day.



East Meets West: The influence of China on 18th-century American design captivated du Pont. He collected both objects that were imported from the East by wealthy colonials and those produced by European and English craftsmen who interpreted the Oriental motifs in their own fashion. Among the items brought to America from China were towering porcelain pagodas and enormous dinner sets of individually monogrammed porcelain made specifically for export to Europe and America. Hand-painted and printed cottons produced in India were among the most popular and influential exports from the East. Among Western interpretations of Oriental designs in the exhibition are a brilliantly lacquered, or japanned, Boston high chest of drawers circa 1750 and a tea table with Oriental fretwork galleries and stretchers.



The Arts of the Pennsylvania Germans: Among the earliest collecting interests of H. F. du Pont and one of the great strengths of the Winterthur collection are the colorful decorative arts of the German settlers of eastern Pennsylvania. This section offers cupboards filled with boldly decorated pottery, chests painted and inlaid with symbolic images of flowers and birds, woven coverlets and quilts, and illuminated manuscripts called Fraktur, which served as paper records of births, marriages, and house blessings. Such objects, made by and

for these rural communities, document various aspects of their daily lives and the wealth of their cultural heritage.



American Classicism: The last section in the exhibition displays the brilliance of the classical revival in the late 18th and early 19th centuries, as colonials became Americans and created their own patriotic heroes reinterpreted from French and English versions of Greek and Roman designs. One such hero was George Washington, who was depicted in scores of textiles, ceramics, paintings, and other decorative objects from this period. These images of America's first president, including John Trumbull's renowned painting Washington at Verplanck's Point (1790), reinforced the concept of democracy and the birth of a new nation.

A final vignette in the exhibition, taken from the Du Pont Dining Room at Winterthur, demonstrates H. F. du Pont's quest for objects with historical significance and his genius for arranging works with relation to color, proportion, and composition. A spectacular 1790 New York sideboard is adorned with six matching tankards made by Boston silversmith Paul Revere in 1772, two mahogany urn-shaped knife cases owned originally by wealthy merchant Elias Hasket Derby, and a selection of exquisite pieces of Chinese porcelain made for the American market. Above the sideboard hangs Benjamin West's important unfinished painting American Commissioners of the Preliminary Peace Negotiations with Great Britain (1783-1784), a scene which heralds the official conclusion of the American Revolution.

ORGANIZATION, CURATOR, CATALOGUE

The exhibition is organized by Winterthur and the National Gallery of Art, Washington. It is curated by Wendy A. Cooper, the Lois F. and Henry S. McNeil Senior Curator of Furniture at Winterthur. An illustrated catalogue will be available in the Gallery Shops and through the Web site at www.nga.gov/shop/shop.htm. To order by phone, call (800) 697-9350.

NATIONAL GALLERY INFORMATION

The National Gallery of Art and its Sculpture Garden, located on the National Mall between Third and Ninth Streets at Constitution Avenue, NW, are open Monday through Saturday from 10 a.m. to 5 p.m. and Sunday from 11 a.m. to 6 p.m. Admission is free. For general information, call (202) 737-4215; call the Telecommunications Device for the Deaf (TDD) at (202) 842-6176; or visit the Gallery's Web site at www.nga.gov.

#

Images: Courtesy, Winterthur Museum

NATIONAL GALLERY OF ART
An American Vision: Henry Francis de Pont's Winterthur Museum
CHECKLIST
(in order of the exhibition installation)
May 5 – October 6, 2002

- ▣ slide available
▲ jpeg available

ENTRANCE

Pennant

United States, 1840–1900

Iron, copper, and paint

Winterthur Museum, Bequest of Henry Francis du Pont 1959.2370

EARLY SETTLEMENT AND SOPHISTICATION

Spoon

New York, New York, 1678–1729

Jacob Boelen (Amsterdam, The Netherlands, 1654–New York, 1729)

Silver

Winterthur Museum, Gift of Charles K. Davis 1956.46.2

1.

Sugar box

▣

Boston, Massachusetts, 1702

▲

Edward Winslow (Boston, 1669–1753)

Silver

Winterthur Museum, Gift of Henry Francis du Pont 1959.3363

Spoon

Boston, Massachusetts, 1692–1708

Jeremiah Dummer (Newbury, Massachusetts, 1645–Boston, 1718)

Silver

Winterthur Museum, Gift of Henry Francis du Pont 1960.1052

Sucket fork

New York, New York, 1682–1722

Jesse Kip (New York, 1660–Newtown, New York, 1722)

Silver

Winterthur Museum, Museum Purchase 1963.52

Candle cup

Boston, Massachusetts, c. 1675

Robert Sanderson Sr. (Hingham, England, 1608–Boston, 1693)

Silver

Winterthur Museum, Gift of Henry Francis du Pont 1961.504

Covered cup

New York, New York, c. 1690
Jurian Blanck Jr. (Amsterdam, The Netherlands, c. 1645–New York, 1699 or 1714)
Silver
Winterthur Museum, Gift of Henry Francis du Pont 1959.2298

2. **Two-handled bowl**

- ▣ New York, c. 1735
▲ Jacob Ten Eyck (Albany, New York, 1705–1793)
Silver
Winterthur Museum, Gift of Charles K. Davis 1955.127

Spout cup

Boston, Massachusetts, c. 1690
John Edwards (Limehouse, England, 1671–Boston, 1746)
Silver
Winterthur Museum, Gift of Henry Francis du Pont 1965.1358

Chargers

Boston, Massachusetts, 1711
Edward Winslow (Boston, 1669–1753)
Silver
Winterthur Museum, Bequest of Henry Francis du Pont 1966.1053–1054

Flagon

Boston, Massachusetts, 1711
Peter Oliver (Boston, 1682–1712)
Silver
Winterthur Museum, Bequest of Henry Francis du Pont 1966.1052

Quilt

England, 1720–1730
Silk and cotton
Winterthur Museum, Gift of Henry Francis du Pont 1968.47a

Dressing table

New England, 1700–1725
Walnut, burl walnut veneer, white pine, and maple with brass hardware
Winterthur Museum, Bequest of Henry Francis du Pont 1958.584

Tankard

New York, New York, c. 1710
Jacob Boelen (Amsterdam, The Netherlands, 1654–New York, 1729)
Silver
Winterthur Museum, Gift of Charles K. Davis 1957.94

Tankard

Boston, Massachusetts, c. 1690
John Coney (Boston, 1655/1656–1722)
Silver
Winterthur Museum, Museum Purchase 1965.33

Cupboard

Newbury, Massachusetts, 1680
Possibly made by the Emery Shop
Oak, sycamore, maple, walnut, and tulipwood
Winterthur Museum, Bequest of Henry Francis du Pont 1966.1261

Bowl with blue and white decoration

Jingdezhen, China, 1600–1925
Porcelain
Winterthur Museum, Gift of Osborne and Mary M. Soverel 1992.34

Plate with blue and white decoration

Jingdezhen, China, c. 1643
Porcelain
Winterthur Museum, Gift of Leo A. and Doris C. Hodroff 2000.61.2

Candlesticks

Nuremberg, Germany, 1650–1690
Brass
Winterthur Museum, Bequest of Henry Francis du Pont 1964.693–694

Plates

Boston, Massachusetts, 1670–1710
Edmund Dolbeare (Boston, c. 1644–c. 1711)
Pewter
Winterthur Museum, Gift of Henry Francis du Pont 1955.60.1
Winterthur Museum, Gift of Charles K. Davis 1955.60.2

3.

Kast



New York, 1700–1735
▲ Tulipwood and maple with painted decoration
Winterthur Museum, Bequest of Henry Francis du Pont 1958.1144

3.

Pair of vases on kast



Netherlands, 1670–1700
▲ Tin-glazed earthenware
Winterthur Museum, Bequest of Henry Francis du Pont 1961.1461.1–2

3.

Jar and cover on kast



Netherlands, 1670–1730
▲ Tin-glazed earthenware
Winterthur Museum, Bequest of Henry Francis du Pont 1961.1463a–b

Chest of drawers

Hadley, Massachusetts, 1710–1720
Red oak, white oak, yellow pine, and chestnut with painted decoration
Winterthur Museum, Museum Purchase 1957.54

Armchair

Boston, Massachusetts, 1695–1710
Maple and red oak with original leather
Winterthur Museum, Gift of Henry Francis du Pont 1958.553

Armchair

Philadelphia, Pennsylvania, 1690–1720
Walnut and cane
Winterthur Museum, Gift of David Stockwell 1955.130

Magdalena Douw (Mrs. Harme Gansevoort)

Hudson River Valley, New York, c. 1740
Oil on canvas
Winterthur Museum, Gift of Henry Francis du Pont 1963.852

Unknown Woman

New York, 1690–1700

Attributed to Gerret Duyckinck (New York, then called New Amsterdam, 1660–1710)

Oil on panel

Winterthur Museum, Bequest of Henry Francis du Pont 1956.565

Valuables cabinet

Salem, Massachusetts, 1679

Attributed to the Symonds Shop

Red oak, red cedar, walnut, and maple with brass

Winterthur Museum, Gift of Henry Francis du Pont 1957.540

4.

Armchair



Essex County, Massachusetts, 1640–1685



Red oak and white oak

Winterthur Museum, Gift of Henry Francis du Pont 1954.73

Turned chair

Boston, Massachusetts, 1650–1675

Maple, ash, tulipwood, and rush

Winterthur Museum, Gift of Henry Francis du Pont 1958.681

Chest of drawers

Ipswich, Massachusetts, 1678

Oak, maple, and walnut with painted decoration

Winterthur Museum, Gift of Henry Francis du Pont 1957.541

A PASSION FOR ROCOCO

Tea table

Boston, Massachusetts, 1755–1765

Mahogany and white pine

Winterthur Museum, Bequest of Henry Francis du Pont 1958.2774

Tea wares

China, 1730–1770

Porcelain

Winterthur Museum, Museum Purchase 1959.77.1–24, 1979.14

Candlesticks

Boston, Massachusetts, c. 1720

John Burt (Boston, 1692/1693–1745/1746)

Silver

Winterthur Museum, Bequest of Henry Francis du Pont 1967.1443.1–2

Textile with floral design

Phippsbridge, Surrey, England, 1765–1775

Nixon & Company

Plate-printed cotton

Winterthur Museum, Bequest of Henry Francis du Pont 1969.3889.3

Needlework picture

Boston, Massachusetts, 1748

Sarah Warren (Barnstable, 1730–Kingston, 1797)

Silk, wool, and linen in original frame with brass sconce plates

Winterthur Museum, Gift of Henry Francis du Pont 1962.69

Chimneyback

Burlington County, New Jersey, 1770–1774
Aetna Furnace (active 1766–1774)
Iron
Winterthur Museum, Bequest of Henry Francis du Pont 1958.2750

Chimneyback

Warren County, New Jersey, 1747
Oxford Furnace (active 1742–1882)
Iron
Winterthur Museum, Bequest of Henry Francis du Pont 1959.2531

5.

Mrs. Roger Morris



New York, New York, 1771



John Singleton Copley
(Boston, Massachusetts, 1738–London, England, 1815)
Oil on canvas
Winterthur Museum, Museum Purchase with funds provided by Henry Francis du Pont 1964.23

Textile with floral design

England, 1775–1790
Block–printed cotton
Winterthur Museum, Museum Purchase 1958.73.1

Tea table

Newport, Rhode Island, 1763
John Goddard (Newport, 1723/1724–1785)
Mahogany and white pine
Winterthur Museum, Gift of Henry Francis du Pont 1958.2149

Salver

Boston, Massachusetts, c. 1750
Thomas Edwards (Boston, 1701/1702–1755)
Silver
Winterthur Museum, Gift of Henry Francis du Pont 1961.938

Decanter and wine glasses

Newcastle upon Tyne, England, c. 1765
Attributed to the shop of William Beilby
Lead glass
Winterthur Museum, Museum Purchase 1975.42a–b, 1975.43.1–2, 1975.44.2

6.

The Edward Lloyd Family



Maryland, 1771



Charles Willson Peale
(Queen Anne's County, Maryland, 1741–Philadelphia, Pennsylvania, 1827)
Oil on canvas
Winterthur Museum, Museum Purchase 1964.124

7.

High chest of drawers



Philadelphia, Pennsylvania, 1760–1770
Mahogany, white pine, tulipwood, and cedar with brass hardware
Winterthur Museum, Gift of Henry Francis du Pont 1957.506

Dressing table

Philadelphia, Pennsylvania, 1760–1770
Mahogany, yellow pine, tulipwood, and cedar with brass hardware
Winterthur Museum, Gift of Henry Francis du Pont 1957.505

Side chair

Philadelphia, Pennsylvania, 1760–1770

Mahogany and yellow pine

Winterthur Museum, Museum Purchase with funds provided by Collector's Circle 1997.34

Side chair

New York, New York, 1760–1780

Mahogany, birch, and maple

Winterthur Museum, Gift of Henry Francis du Pont 1952.243

John Purves and His Wife Eliza Anne Pritchard

Charleston, South Carolina, 1775–1777

Henry Benbridge

(Philadelphia, Pennsylvania, 1743–1812)

Oil on canvas

Winterthur Museum, Bequest of Henry Francis du Pont 1960.582

8.

Sconces



London, England, 1760–1770



Brass

Winterthur Museum, Museum Purchase 1957.126.26–27

Looking glass

Philadelphia, Pennsylvania, 1770–1771

Attributed to James Reynolds (England, 1736 –Philadelphia, 1794)

Pine, poplar, and paint with silvered glass

Winterthur Museum, Gift of Henry Francis du Pont 1952.261

The Gore Children

Boston, c. 1755

John Singleton Copley

(Boston, Massachusetts, 1738–London, England, 1815)

Oil on canvas

Winterthur Museum, Gift of Henry Francis du Pont 1959.3408

9.

Side chair



Philadelphia, Pennsylvania, 1770



Attributed to the shop of Thomas Affleck (Aberdeen, Scotland, 1740–Philadelphia, 1795)

Mahogany, white cedar, and cypress (arborvitae)

Winterthur Museum, Gift of Henry Francis du Pont 1958.2290

Tea table

Philadelphia, Pennsylvania, 1765–1780

Mahogany

Winterthur Museum, Gift of Henry Francis du Pont 1960.1061

Chest on chest

Providence, Rhode Island, 1775–1790

Mahogany, chestnut, and white pine with brass hardware

Winterthur Museum, Bequest of Henry Francis du Pont 1957.1394

Desk and bookcase

Boston, Massachusetts, 1780–1795

Attributed to John Cogswell (Ipswich, 1738–Boston, 1819)

Mahogany, white pine, and yellow pine with brass hardware

Winterthur Museum, Gift of Henry Francis du Pont 1957.1396

Side chair

Philadelphia, Pennsylvania, 1760–1775
Mahogany, white pine, and white cedar
Winterthur Museum, Gift of Henry Francis du Pont 1952.240.3

Side chair

Massachusetts, 1770–1780
Mahogany and bald cypress
Winterthur Museum, Gift of Henry Francis du Pont 1952.242

Slab-top side table

Charleston, South Carolina, or Philadelphia, Pennsylvania, 1760–1775
Mahogany, yellow pine, and marble
Winterthur Museum, Bequest of Henry Francis du Pont 1960.1071

Centerpiece for candied fruits or nuts (Grand Platt Menage)

Staffordshire or Yorkshire, England, 1775–1810
Cream-colored earthenware (creamware)
Winterthur Museum, Museum Purchase with funds provided by Collector's Circle 2000.5

10. ***Mrs. Benjamin Rush (Julia Stockton)***

▲ Philadelphia, 1776
Charles Willson Peale
(Queen Anne's County, Maryland, 1741– Philadelphia, Pennsylvania, 1827)
Oil on canvas
Winterthur Museum, Gift of Mrs. T. Charlton Henry 1960.392

Benjamin Rush

Philadelphia 1783–1786
Charles Willson Peale
(Queen Anne's County, Maryland, 1741– Philadelphia, Pennsylvania, 1827)
Oil on canvas
Winterthur Museum, Gift of Mrs. T. Charlton Henry 1959.160

EAST MEETS WEST

Looking glass

England, 1760–1780
Yellow pine, gesso, and gilt, with silvered glass
Winterthur Museum, Museum Purchase 1962.70

China table

Newport, Rhode Island, 1785–1800
Attributed to John Townsend (Newport, 1732–1809)
Mahogany, chestnut, white pine, and maple
Winterthur Museum, Museum Purchase 1958.37

Tea wares

China, 1786–1795
Porcelain and gilt
Winterthur Museum, Bequest of Henry Francis du Pont 1963.714.1a–b, 3–4, 6a–b, 11–12a–b

11. **Pagoda**

▣ China, 1785–1830
▲ Porcelain and gilt wooden finials
Winterthur Museum, Bequest of Henry Francis du Pont 1959.3382a–c

Pagoda

China, 1785–1830

Porcelain and gilt wooden finials

Winterthur Museum, Bequest of Henry Francis du Pont 1959.3381a–c

Textile with chinoiserie design

England, c. 1785

Plate–printed cotton

Winterthur Museum, Gift of Henry Francis du Pont 1955.634.6

Plate with landscape scene

Bristol, England, 1720–1780

Earthenware (delftware) with manganese ground

Winterthur Museum, Bequest of Henry Francis du Pont 1963.537

Plate with landscape scene

Bristol, England, 1720–1740

Earthenware (delftware) with manganese ground

Winterthur Museum, Bequest of Henry Francis du Pont 1963.538

Bowl with blue fish

Bristol, England, 1720–1740

Earthenware (delftware) with manganese ground

Winterthur Museum, Bequest of Henry Francis du Pont 1963.549

Bowl with blue fish

Bristol, England, 1730–1770

Earthenware (delftware) with manganese ground

Winterthur Museum, Bequest of Henry Francis du Pont 1963.551

Bowl with blue bird

Bristol, England, 1720–1740

Earthenware (delftware) with manganese ground

Winterthur Museum, Bequest of Henry Francis du Pont 1963.552

Plate with polychrome floral decoration

Lambeth (now in London), England, 1750–1760

Earthenware (delftware) with manganese ground

Winterthur Museum, Bequest of Henry Francis du Pont 1963.555

Plate with polychrome floral decoration

Probably Bristol, England, 1750–1760

Earthenware (delftware) with manganese ground

Winterthur Museum, Bequest of Henry Francis du Pont 1965.509

Plate with blue leaf and vase decoration

China, 1600–1612

Porcelain

Winterthur Museum, Museum Purchase 1977.62

Tea wares with prunus blossom decoration

London, England, 1760–1770

Bow Porcelain Works (active c. 1747–1776)

Porcelain

Winterthur Museum, Gift of Mr. and Mrs. John Mayer 1982.132–133 (cup, bowl)

Winterthur Museum, Museum Purchase 1986.163 (plate)

Plate with scene of citizens rioting in Rotterdam in 1690

China, 1690–1700
Porcelain
Winterthur Museum, Museum Purchase 1983.14

Plate with landscape scene

Probably Liverpool, England, 1770
Earthenware (delftware) with blue powdered ground
Winterthur Museum, Museum Purchase 1956.38.74

Plate with chinoiserie design

London, England, 1740–1760
Earthenware (delftware) with yellow powdered ground
Winterthur Museum, Bequest of Henry Francis du Pont 1958.994

Mug with chinoiserie design

Worcester, England, 1755–1765
Worcester Porcelain Factory
Porcelain
Winterthur Museum, Bequest of Henry Francis du Pont 1958.728

Posset pot with landscape scene

Lambeth (now in London), England, 1711
Earthenware (delftware)
Winterthur Museum, Bequest of Henry Francis du Pont 1959.1875

Plate with polychrome landscape scene

Staffordshire, England, 1750–1760
Stoneware (salt glaze)
Winterthur Museum, Gift of Mr. and Mrs. John Mayer 1974.195

Posset pot with polychrome decoration

Lambeth (now in London), England, 1690–1710
Earthenware (delftware)
Winterthur Museum, Bequest of Henry Francis du Pont 1958.2381a–b

Textile with chinoiserie decoration

England, 1765–1775
Plate–printed cotton
Winterthur Museum, Museum Purchase 1958.112.6d

Plate with Morgan family coat of arms

China, 1790–1800
Porcelain
Winterthur Museum, Gift of Charles K. Davis 1956.46.49

Platter with green FitzHugh pattern and eagle

China, 1800–1820
Porcelain
Winterthur Museum, Bequest of Henry Francis du Pont 1956.548.22

Tureen with green FitzHugh pattern and eagle

China, 1800–1820
Porcelain
Winterthur Museum, Gift of the Grandchildren of J.T. Dorrance, Jr. 1996.4.44a–b

Platter with green FitzHugh pattern and eagle

China, 1800–1820
Porcelain
Winterthur Museum, Gift of the Grandchildren of J.T. Dorrance, Jr. 1996.4.45

Platter with green FitzHugh pattern

China, 1800–1820

Porcelain

Winterthur Museum, Gift of the Grandchildren of J.T. Dorrance, Jr. 1996.4.165c

Plate depicting Vaughan family coat of arms

Jingdezhen, China, c. 1755

Porcelain

Winterthur Museum, Gift of Wunsch Americana Foundation 1976.82.1

Sample plate with four border patterns

China, 1795–1810

Porcelain

Winterthur Museum, Bequest of Henry Francis du Pont 1966.589

Jug with great seal of the United States

China, 1795–1815

Porcelain

Winterthur Museum, Bequest of Henry Francis du Pont 1961.665 a–b

Mug with great seal of the United States

China, 1795–1815

Porcelain

Winterthur Museum, Bequest of Henry Francis du Pont 1961.666.1–9

Leaf-shaped plate with steamboat of the “Philadelphia/Union Line”

China, 1820–1840

Porcelain

Winterthur Museum, Bequest of Henry Francis du Pont 1963.706.1

Sauceboat with steamboat of the “Philadelphia/Union Line”

China, 1820–1840

Porcelain

Winterthur Museum, Bequest of Henry Francis du Pont 1963.706.2

Coffeepot with coat of arms of New York State

China, 1790–1815

Porcelain

Winterthur Museum, Bequest of Henry Francis du Pont 1963.798a–b

Tureen with figure representing Hope

Made for Elias Hasket Derby of Salem, Massachusetts

China, 1786

Porcelain

Winterthur Museum, Bequest of Henry Francis du Pont 1956.550.1a–b

Large punch bowl with blue decoration

England, 1735–1755

Tin-glazed earthenware (delftware)

Winterthur Museum, Gift of Henry Francis du Pont 1958.95.3

Small bowl with blue decoration

Jingdezhen, China, 1710–1740

Porcelain

Winterthur Museum, Museum Purchase with special funds for Collection Objects provided by the Claneil Foundation 1976.65

12. **Hong punch bowl**

▣ China, 1788–1810

▲ Porcelain

Winterthur Museum, Bequest of Henry Francis du Pont 1961.1427

13. **High chest**

▣ Boston, Massachusetts, 1740–1750

▲ John Pimm (died Boston, 1773)

Walnut, maple, and white pine with japanned decoration and brass hardware

Winterthur Museum, Gift of Henry Francis du Pont 1957.1084

Side chair

Boston, Massachusetts, 1735–1750

Walnut

Winterthur Museum, Gift of Catherine C. Lastavica in honor of E. McSherry Fowble 2000.50.1

14. **Needlework picture**

▣ Philadelphia, Pennsylvania, 1754

▲ Mary King

Silk and metallic yarns and glass beads embroidered on silk

Winterthur Museum, Bequest of Henry Francis du Pont 1966.978

Tall clock

Boston, Massachusetts, 1749–1755

Japanning attributed to Thomas Johnston (1708–Boston, 1767); clockworks by Gawen Brown (England, 1719–Boston, 1801)

White pine with japanned decoration

Winterthur Museum, Museum Purchase 1955.96.3

Palampore (bed cover)

India, 1690–1720

Hand-painted cotton

Winterthur Museum, Gift of Henry Francis du Pont 1957.1290

Quilt

United States, 1795–1825

Cotton

Winterthur Museum, Museum Purchase with funds provided by Mr. Samuel Pettit in memory of his wife, Sally Pettit 2001.21

Digging the Ground for Porcelain

China, 1800–1810

Watercolor, paper

Winterthur Museum, Museum Purchase 1956.38.106

Loading Boats for Canton

China, 1800–1810

Watercolor, paper

Winterthur Museum, Museum Purchase 1956.38.127

Throwing It on a Wheel

China, 1800–1810

Watercolor, paper

Winterthur Museum, Museum Purchase 1956.38.115

Placing Them in a Kiln

China, 1800–1810

Watercolor, paper

Winterthur Museum, Museum Purchase 1956.38.118

View of the Foreign Factories (Hongs) in Canton

China, 1800–1810

Oil on canvas

Winterthur Museum, Gift of Henry Francis du Pont 1965.1601

THE ARTS OF THE PENNSYLVANIA GERMANS

Dresser

Pennsylvania, 1750–1800

Walnut and white pine

Winterthur Museum, Bequest of Henry Francis du Pont 1967.1167

Displayed with a selection of sgraffito wares from Winterthur Museum

15. **Lion**

▣ Waynesboro, Pennsylvania, 1840–1865

▲ John Bell Sr. (1800–1880)

Lead-glazed earthenware

Winterthur Museum, Bequest of Henry Francis du Pont 1967.1630

Tall clock

Dauphin County, Pennsylvania, 1815

John Paul Jr. (1789–1868)

Maple, mahogany, walnut, white pine, ash, and tulipwood with ivory, iron, brass; painted dial

Winterthur Museum, Bequest of Henry Francis du Pont 1958.2874

Dresser

Pennsylvania, 1765–1810

Yellow pine

Winterthur Museum, Bequest of Henry Francis du Pont 1967.1171

Displayed with a selection of spatterware from Winterthur Museum

Slat-back side chair

Delaware Valley, Pennsylvania, 1725–1750

Maple with rush seat

Winterthur Museum, Bequest of Henry Francis du Pont 1959.2332

Slat-back side chair

Delaware Valley, Pennsylvania, 1725–1750

Maple, painted black with rush seat

Winterthur Museum, Bequest of Henry Francis du Pont 1959.2402

Sconces

United States, 1800–1850

Tin

Winterthur Museum, Bequest of Henry Francis du Pont 1967.1549.1–2

Desk

Schwaben Creek Valley, Pennsylvania, 1834

Tulipwood with painted decoration and brass hardware

Winterthur Museum, Bequest of Henry Francis du Pont 1964.1518

16. **Eagle**

▲ Cumberland Valley, Pennsylvania, 1865–1890

Wilhelm Schimmel (Germany, 1817–Cumberland County, Pennsylvania, 1890)

White pine with painted decoration

Winterthur Museum, Bequest of Henry Francis du Pont 1959.2341

Chest

Northumberland County, Pennsylvania, 1800–1825
White pine with painted decoration
Winterthur Museum, Museum Purchase 1957.99.4

Desk and bookcase

Possibly Northampton County, Pennsylvania, 1785–1810
White pine with painted decoration, bone inlay, and brass hardware
Winterthur Museum, Bequest of Henry Francis du Pont 1957.502

Inkwell

Pennsylvania, 1775–1820
Earthenware
Winterthur Museum, Bequest of Henry Francis du Pont 1959.2164a–c

Box

United States, 1770–1800
White pine with painted decoration and iron hardware
Winterthur Museum, Bequest of Henry Francis du Pont 1959.2805

Box

United States, 1785
Tulipwood with painted decoration and iron hardware
Winterthur Museum, Bequest of Henry Francis du Pont 1959.2806

17.



Chest

Berks County, Pennsylvania, 1765–1810
White pine with painted decoration and iron hardware
Winterthur Museum, Museum Purchase 1955.95.1



Sconces

Europe, 1775–1825
Tin and iron
Winterthur Museum, Bequest of Henry Francis du Pont 1961.1175–1176

Fraktur

Possibly Northumberland County, Pennsylvania, c. 1798
Watercolor on paper
Winterthur Museum, Bequest of Henry Francis du Pont 1961.1109

Fraktur

Page County, Virginia, 1794
Jacob Strickler (Shenandoah County, Virginia, 1770–1842)
Watercolor on paper
Winterthur Museum, Bequest of Henry Francis du Pont 1957.1208a

Fraktur

Pennsylvania, 1810
Friedrich Krebs (near Kassel, Germany, c. 1794–Dauphin County, Pennsylvania, 1815)
Watercolor on paper
Winterthur Museum, Bequest of Henry Francis du Pont 1961.1112

Fraktur

Delaware County, Pennsylvania, 1796
Signed C.M.
Watercolor on paper
Winterthur Museum, Bequest of Henry Francis du Pont 1957.1188

Fraktur

Northumberland County, Pennsylvania, 1814–1820
Johann C. Trevits (1751–1830)
Watercolor on paper
Winterthur Museum, Bequest of Henry Francis du Pont 1957.1196

Fraktur

Montgomery County, Pennsylvania, 1800–1815
Friedrich Krebs (near Kassel, Germany, c. 1794–Dauphin County, Pennsylvania, 1815)
Watercolor on paper
Winterthur Museum, Bequest of Henry Francis du Pont 1957.1250

Fraktur

Lebanon County, Pennsylvania, 1795–1815
H. Seiler
Watercolor on paper
Winterthur Museum, Museum Purchase with funds provided Henry Francis du Pont 1958.120.9

Fraktur

Bucks County, Pennsylvania, 1796
Johann A. Eyer (Bucks County, 1755–Monroe County, 1837)
Watercolor on paper
Winterthur Museum, Bequest of Henry Francis du Pont 1960.347

Fraktur

Franklin County, Pennsylvania, c. 1801
Joseph Lochbaum
Watercolor on paper
Winterthur Museum, Bequest of Henry Francis du Pont 1961.189

Coverlet

Lancaster County, Pennsylvania, dated 1834
Isaac Brubaker (died Lancaster County, 1887)
Wool and cotton
Winterthur Museum, Gift of Mr. and Mrs. David Stockwell 1968.53

Quilt

Probably Bucks County, Pennsylvania, dated 1830
Wool, cotton, and silk thread
Winterthur Museum, Museum Purchase 2000.71

AMERICAN CLASSICISM

18. ***American Commissioners of the Preliminary Peace Negotiations with Great Britain***

▣ London, England, 1783–1784
▲ Benjamin West
(Springfield, Pennsylvania, 1738–London, England, 1820)
Oil on canvas
Winterthur Museum, Gift of Henry Francis du Pont 1957.856

18. **Sideboard**

▣ New York, New York, 1795–1805
▲ Mahogany, mahogany and satinwood veneers, inlays, white pine, tulipwood, and ash with brass hardware
Winterthur Museum, Bequest of Henry Francis du Pont 1957.850

18. **Tankards**

- ▣ Boston, Massachusetts, 1772
- ▲ Paul Revere Jr. (Boston, 1735–1818)
Silver
Winterthur Museum, Gift of Henry Francis du Pont 1957.859.1–6

18. **Candlesticks**

- ▣ London, England, 1759–1760
- ▲ Silver
Winterthur Museum, Bequest of Henry Francis du Pont 1961.649.1–2a–b

18. **Punch bowl with blue and gilt decoration**

- ▣ Jingdezhen, China, c. 1794
- ▲ Porcelain
Winterthur Museum, Gift of Henry Francis du Pont 1959.149

18. **Covered tureens with blue and gilt decoration**

- ▣ Jingdezhen, China, 1785–1810
- ▲ Porcelain
Winterthur Museum, Bequest of Henry Francis du Pont 1961.647.1–2a–c

18. **Urns with blue and gilt decoration**

- ▣ Jingdezhen, China, 1790–1810
- ▲ Porcelain
Winterthur Museum, Bequest of Henry Francis du Pont 1961.1041.1–2

18. **Knife boxes**

- ▣ England, 1790–1800
- ▲ Mahogany, maple, fir (deal), and tropical wood inlays with brass
Winterthur Museum, Bequest of Henry Francis du Pont 1957.853.1–2

18. **Forks**

- ▣ England, 1809
- ▲ Silver, steel, and ivory
Winterthur Museum, Gift of Henry Francis du Pont 1954.79.3, 9, 11, 17, 21

18. **Knives**

- ▣ England, 1809
- ▲ Silver, steel, and ivory
Winterthur Museum, Gift of Henry Francis du Pont 1954.79.38–39, 42, 44–45, 48

19. **Clock**

- ▣ Paris, France, 1804–1817
- ▲ Jean-Baptiste Dubuc
Brass, steel, and glass
Winterthur Museum, Bequest of Henry Francis du Pont 1957.744

Pier table

- New York, New York, 1805–1810
- Charles-Honoré Lannuier (Chantilly, France, 1779–New York, 1819)
- Mahogany and mahogany, satinwood, and rosewood veneers, and white pine with brass molding and hardware
- Winterthur Museum, Bequest of Henry Francis du Pont 1957.685

Work table

New York, New York, 1810–1819
Charles–Honoré Lannuier (Chantilly, France, 1779–New York, 1819)
Mahogany, maple and rosewood veneers, white pine, and tulipwood with gilded gesso and brass
Winterthur Museum, Museum Purchase with funds provided by Henry Francis du Pont 1960.6

Armchair

New York, New York, 1807
Duncan Phyfe (Loch Fannich, Scotland, 1768 –New York, 1854)
Mahogany, ash, and cherry
Winterthur Museum, Bequest of Henry Francis du Pont 1957.720.2

Victorine du Pont

Near Wilmington, Delaware, 1813
Rembrandt Peale
(Bucks County, Pennsylvania, 1778–Philadelphia, Pennsylvania, 1860)
Oil on canvas
Winterthur Museum, Bequest of Henry Francis du Pont 1961.709

Candelabra

Paris, France, 1810–1815
Pierre–Philippe Thomire (Paris, 1751–1843)
Brass with mercury gilding
Winterthur Museum, Bequest of Henry Francis du Pont 1961.1223.1–2

20. **Mrs. Perez Morton (Sarah Wentworth Apthorp)**

▣ Philadelphia, Pennsylvania, 1802–1803

▲ Gilbert Stuart

(North Kingstown Township, Rhode Island, 1755–Boston, Massachusetts, 1828)
Oil on panel
Winterthur Museum, Gift of Henry Francis du Pont 1963.77

Looking glass

Albany, New York, 1790–1810
White pine with gesso, and gilt, reverse–painted glass and silvered glass
Winterthur Museum, Bequest from the Estate of Miss Helen DeLancey Watkins 1968.109

Ladies desk

Baltimore, Maryland, 1790–1810
Mahogany, satinwood, mahogany and satinwood veneers, and red cedar with reverse–painted glass and brass hardware
Winterthur Museum, Museum Purchase 1957.68

Jerusha Benedict

Danbury, Connecticut, 1790
Ralph Earl
(1751–1801)
Oil on canvas
Winterthur Museum, Bequest of Mrs. Lammot du Pont Copeland 2001.49

Tambour desk

Boston, Massachusetts, 1794–1804
John Seymour (1738–c. 1818) and Thomas Seymour (1771–1848)
Mahogany, mahogany veneer, light wood inlay, white pine, and white elm with brass and enamel on copper hardware
Winterthur Museum, Bequest of Henry Francis du Pont 1957.802

Banjo clock

Roxbury, Massachusetts, 1802–1810
Simon Willard (Grafton, Massachusetts, 1753–Boston, 1848)
Mahogany, white pine, brass, and glass with reverse-painted decoration
Winterthur Museum, Bequest of Henry Francis du Pont 1957.952 a–b

21. **Washington at Verplanck's Point**

▣ New York, 1790
▲ John Trumbull
(born Lebanon, Connecticut, 1756–died New York, New York, 1843)
Oil on canvas
Winterthur Museum, Gift of Henry Francis du Pont 1964.2201

22. **Collector's cabinet**

▲ Philadelphia, Pennsylvania, 1810–1820
Mahogany, mahogany and satinwood veneers, tulipwood, and white pine with silvered glass
Winterthur Museum, Bequest of Henry Francis du Pont 1957.945

Armchair

Philadelphia, Pennsylvania, or New York, New York, 1815–1825
Ebonized maple with gilt decoration
Winterthur Museum, Bequest of Henry Francis du Pont 1957.739

Girandole clock

Concord, Massachusetts, 1816–1821
Lemuel Curtis (Concord, 1790–Burlington, Vermont, 1857)
Wood, paint, and reverse-painted glass
Winterthur Museum, Bequest of Henry Francis du Pont 1967.1449

Girandole looking glass

United States, 1830–1840
Wood, silvered glass, gesso, and gilt
Winterthur Museum, Gift of Mrs. Robert J. Leonard 1971.25
(Girandole, derived from French and Italian words meaning "to turn around," was used in Europe and America to describe circular mirrors with convex glass. The term was also used in early nineteenth-century America for clocks of similar form.)

Election Day in Philadelphia

Philadelphia, 1815
John Lewis Krimmel
(born Ebingen, Germany, 1786–died Philadelphia, Pennsylvania, 1821)
Oil on canvas
Winterthur Museum, Museum Purchase with funds provided by Henry Francis du Pont 1959.0131

"Apotheosis of Franklin and Washington"

England, 1785–1790
Plate-printed cotton
Winterthur Museum, Bequest of Henry Francis du Pont 1969.3181

Tureen, cover, and platter with Order of the Cincinnati insignia

China, 1784
Porcelain
Winterthur Museum, Gift of Henry Francis du Pont 1963.700.57a–c

Dinner plate with Order of the Cincinnati insignia

China, 1784
Porcelain
Winterthur Museum, Gift of Henry Francis du Pont 1963.700.35

Leaf-shaped plate with Order of the Cincinnati insignia

China, 1784

Porcelain

Winterthur Museum, Gift of Henry Francis du Pont 1963.700.69

Jug with bust of George Washington

China, 1810–1820

Porcelain

Winterthur Museum, Bequest of Henry Francis du Pont 1963.822a–b

Platter with gold, salmon, and sepia decoration

China, 1800–1810

Porcelain

Winterthur Museum, Bequest of Henry Francis du Pont 1963.966.1

Vase with engraved view of the President's House, Washington

Bohemia, 1840–1860

Glass

Winterthur Museum, Museum Purchase 1992.119.1

Medal

Philadelphia, Pennsylvania, 1789

Joseph Richardson Jr. (Philadelphia, 1752 –1831)

Silver

Winterthur Museum, Gift of Henry Francis du Pont 1961.1055

Mourning pin containing hair from George and Martha Washington

United States, 1797–1810

Gold, enamel on copper, hair, leather, and glass

Winterthur Museum, Gift of Mrs. Paul Hammond 1962.84

Skippet

Washington, D.C., 1825–1852

Seraphim Masi (active 1822–1852)

Silver and cord

Winterthur Museum, Museum Purchase 1956.98.1

Medallion of George Washington

Paris, France, 1815–1825

Barthelemy Desprez Jr. (active c. 1815–c. 1834)

White clay encased in glass

Winterthur Museum, Bequest of Henry Francis du Pont 1959.561

Goblet with engraved eagle

Bohemia or Germany, engraving possibly added in United States, c. 1795

Glass

Winterthur Museum, Bequest of Henry Francis du Pont 1959.3065

Wine glass

Possibly Maryland, 1814–1815

Possibly Baltimore Glass Manufactory (active 1800–c. 1880)

Glass

Winterthur Museum, Gift of Mr. and Mrs. Norton Asner 1971.137

Tumbler with portrait of George Washington in base

Pittsburgh, Pennsylvania, 1824–1832

Bakewell & Page (active 1808–1882)

White clay encased in glass

Winterthur Museum, Gift of Mrs. Hugh Kelley 1987.128

Needlework picture

United States, 1800–1810

E. S. Sefford

Silk, watercolor, and metallic thread with original reverse-painted glass and frame
Winterthur Museum, Bequest of Henry Francis du Pont 1957.783

Vase

Philadelphia, Pennsylvania, 1825–1838

William Ellis Tucker (1800–1832; Tucker factory active 1826–1838)

Porcelain

Winterthur Museum, Bequest of Henry Francis du Pont 1965.1393

23. **Vase**



Staffordshire, England, 1790–1800

Josiah Wedgwood's factory (active 1769–1950)

Stoneware (jasperware)

Winterthur Museum, Museum Purchase with funds provided by Collector's Circle and the Winterthur Centenary Fund 1997.14

Goblet

Frederick County, Maryland, 1791–1793

Attributed to New Bremen Glassmanufactory of John Frederick Amelung
(active 1786–c. 1794)

Glass

Winterthur Museum, Bequest of Henry Francis du Pont 1959.47a–b

Tumbler

Frederick County, Maryland, dated 1788

Attributed to New Bremen Glassmanufactory of John Frederick Amelung
(active 1786–c. 1794)

Glass

Winterthur Museum, Bequest of Henry Francis du Pont 1959.3009 a–b

Ewer

Philadelphia, Pennsylvania, 1812–1820

Thomas Fletcher and Sidney Gardiner (partners in Philadelphia, 1811–1827)

Silver

Winterthur Museum, Museum Purchase 1969.16

Furniture mounts with original wrappings

France, 1810–1830

Gilt brass, brown paper

Winterthur Museum, Gift of Jill Ehninger Meyer 2000.38

Coffee and tea service

Philadelphia, Pennsylvania, 1809–1812

Anthony Rasch and Simon Chaudron (partners in Philadelphia, 1809–1812)

Silver, wood

Winterthur Museum, Given by Mr. and Mrs. Henry Pleasants in memory of Maria Wilkins Smith, 1884–1973, 1975.80.1–5

Sugar tongs

New York, New York, 1815–1828

Maltby Pelletreau, John Bennett, and D.C. Cooke (partners in New York, 1826–1828)

Silver

Winterthur Museum, Museum Purchase 1981.51

Textile with classical design

Jouy-en-Josas, France, c. 1800

Oberkampf Factory

Plate- or roller-printed cotton

Winterthur Museum, Bequest of Henry Francis du Pont 1969.592.1

Looking glass

New York, New York, 1800-1825

Red pine and spruce with gesso and gilt on silvered glass

Winterthur Museum, Bequest of Henry Francis du Pont 1957.941

24.

***Klismos* chair**



Baltimore, Maryland, 1815-1825



Tulipwood and maple with painted decoration

Winterthur Museum, Museum Purchase 1992.29.2

Card table

Baltimore, Maryland, 1800-1810

Mahogany, white pine, tulipwood, and maple with painted decoration

Winterthur Museum, Museum Purchase with partial funds provided by an anonymous donor and Mr. and Mrs. John R. Donnell 1999.9

###

National Gallery of Art

PRESS OFFICE

GENERAL INFORMATION • EXHIBITIONS • IMAGE LISTS • RECENT ANNOUNCEMENTS • PRESS ARCHIVES • CONTACT US

Online Press Kit

[News Release](#)[Checklist \(PDF 60k\)](#)[Online Resources](#)

Winterthur Chronology

[Biography of Henry Francis du Pont](#)[Quotes from Henry Francis du Pont](#)[Selections from the Exhibition](#)[Guest Curator's Biography](#)[Sponsor Statement \(PDF 48k\)](#)*For Press Inquiries Only:*

Lisa Knapp, Publicist
(202) 842-6804
l-knapp@nga.gov

An American Vision

Henry Francis du Pont's Winterthur Museum

WINTERTHUR CHRONOLOGY

1801

Pierre Samuel du Pont de Nemours, sons Victor Marie and Eleuthère Irénée, and their families arrive in America.

1802

The Du Pont family settles in the Brandywine Valley. E. I. du Pont establishes gunpowder manufactory, E. I. du Pont de Nemours & Co.

1810-18

E. I. Du Pont purchases four tracts of land forming the nucleus of what later becomes Winterthur.

1834

E.I. du Pont dies and leaves the property to his children.

1837

Jacques Antoine Bidermann and his wife, Evelina Gabrielle, a daughter of E. I. du Pont, purchase the property from the other siblings and begin construction on a twelve-room Greek revival mansion. They name it Winterthur after Bidermann's ancestral home in Switzerland.

1839

Jacques Antoine and Evelina du Pont Bidermann move into the house at Winterthur.

1863

Evelina du Pont Bidermann dies.

1865

Jacques Antoine Bidermann dies.

1867

General Henry du Pont (brother of Evelina) purchases Winterthur from his nephew James Irénée Bidermann (son of Jacques and Evelina), for his own son Colonel Henry Algernon du Pont.

1876

Col. Henry Algernon and Pauline Foster du Pont, who married in 1874, settle at Winterthur.

1880

Henry Francis du Pont is born to Col. Henry Algernon and Pauline Foster du Pont.

1889

Gen. Henry du Pont dies; Col. Henry Algernon inherits Winterthur.

1899

H. F. du Pont enters Harvard.

1902

Col. Henry Algernon du Pont adds a new façade and library wing to the existing building at Winterthur. Pauline Foster du Pont dies.

1903

H. F. du Pont graduates from Harvard and begins to manage the Winterthur household for his father.

1909

H. F. du Pont takes over supervision of the gardens and grounds.

1914

H. F. du Pont becomes manager of Winterthur Farms.

1916

H. F. du Pont marries Ruth Wales.

1926

Col. Henry Algernon du Pont dies; H. F. du Pont inherits Winterthur.

1928-32

A new wing is constructed, doubling the size of the existing building.

1930

H. F. du Pont establishes the Winterthur Corporation, a nonprofit, educational foundation, with the intent of opening his home as a museum.

1951

Winterthur opens to the public on October 30.

1952

Winterthur Program in Early American Culture is established. First garden tour is given.

1958

Winterthur fire department is established..

1961

The Pavilion opens as the visitor reception area.

1966

Copeland Lecture Hall opens.

1967

Ruth Wales du Pont dies.

1969

H. F. du Pont dies. The Louise du Pont Crowninshield Research Building, named for his sister, opens.

1974

Winterthur/Univ. of Delaware Art Conservation program is established.

1976

The Winterthur Guild is established.

1978

First Christmas tour; officially called Yuletide at Winterthur in 1979.

1992

The Galleries at Winterthur open.

1993

The Henry S. McNeil Gallery opens.

1994

The Thomas A. Graves, Jr., Gallery for changing exhibitions opens.

1997

The Campbell Collection of Soup Tureens at Winterthur opens in the new Dorrance Gallery. (The collection was donated to Winterthur in 1996.)

2000

Director Leslie Greene Bowman introduces new vision: Winterthur: An American Country Estate.

2001

Winterthur's 50th Anniversary; Enchanted Woods opens.

GENERAL INFORMATION

The National Gallery of Art and its Sculpture Garden are located on the National Mall between Third and Ninth Streets at Constitution Avenue, NW, and are open Monday through Saturday from 10:00 a.m. to 5:00 p.m. and Sunday from 11:00 a.m. to 6:00 p.m. Through Labor Day, the Sculpture Garden's extended hours will be Monday through Thursday and Saturday 10:00 a.m. to 7:00 p.m., Friday 10:00 a.m. to 9:00 p.m., and Sunday 11:00 a.m. to 7:00 p.m. The Gallery is closed on December 25 and January 1.

Visitors will be asked to present all bags and parcels for inspection. Backpacks and parcels must be left in the checkrooms. No parcels larger than 17 x 26 inches

will be accepted in the checkrooms. Suitcases are permitted and must be x-rayed at the East or West Building entrances on 4th Street before being accepted in the checkrooms as they enter the Gallery.

Admission is always free.

General information: (202) 737-4215

Telecommunications Device for the Deaf (TDD): (202) 842-6176.

To receive the Gallery's free bimonthly Calendar of Events call (202) 842-6662

If you are a member of the press and would like more information or would like to be added to our press list, please contact the Press Office at pressinfo@nga.gov, call (202) 842-6353, or send inquiries to:

Press Office
National Gallery of Art
2000B South Club Drive
Landover, MD 20785

If you would subscribe to the Gallery's Web site newsletter, contact webnews@nga.gov with the word "**subscribe**" in the subject field and you will be automatically signed up. Your message must come from the e-mail account to which you want the newsletter to be sent. If you decide to remove your name from future mailings, send an e-mail to webnews@nga.gov with the word "**unsubscribe**" in the subject field.

National Gallery of Art, Press Office

[home](#) | [general information](#) | [exhibitions](#) | [image lists](#) | [recent announcements](#)
[press archives](#) | [contact us](#) | [nga.gov](#)

Copyright ©2003 National Gallery of Art, Washington, DC

National Gallery of Art

PRESS OFFICE

GENERAL INFORMATION • EXHIBITIONS • IMAGE LISTS • RECENT ANNOUNCEMENTS • PRESS ARCHIVES • CONTACT US

Online Press Kit

[News Release](#)[Checklist \(PDF 60k\)](#)[Online Resources](#)[Winterthur Chronology](#)[Biography of Henry
Francis du Pont](#)**Quotes from Henry
Francis du Pont**[Selections from the
Exhibition](#)[Sponsor Statement \(PDF
48k\)](#)[Guest Curator's Biography](#)*For Press Inquiries Only:*

Lisa Knapp, Publicist

(202) 842-6804

l-knapp@nga.gov

QUOTES FROM HENRY FRANCIS DU PONT

"The vast scope of the collection gives a new understanding to and respect for the integrity of American craftsmanship."

"The general goal is to promote the broadest possible understanding of the American people through an integrated study of the culture of early America."

"A culture is fully known only as its arts are known; its arts are known only as its art objects are studied in their rich variety and social context."

"During the years I have collected, I have had many satisfactions and only one regret. The latter is for the things I might have acquired, but allowed to escape me. My satisfactions are in the contacts I have made with a great number of interesting people, in my greater consciousness of the development of our country, and in my immensely increased appreciation of the generations that have preceded."

"Hundreds of thousands of Americans, now as never before, are actively exploring their heritage; reading history, studying collections of Americana, visiting historic shrines."

"Art belongs to the center, not the periphery of life. It is not the pastime of princes, but a necessary language of the human spirit."

"A philosophy of collecting is highly subjective. Each individual who collects anything of a serious nature thinks in increasingly creative terms, almost as if his growing collection were a kind of artistic medium. This is true, I think, because a foremost drive for the collector is a love of his materials. To him these are of such beauty or importance as to cause him to preserve them, by no means for himself alone, but in order to share his discoveries. Because he believes in what he collects, he wants others to do so, too."

"It is an occasion to stimulate interest in America's arts and skills as they were developed over the years by a people divinely inspired, a body of pioneers, who learned to combine beauty and utility in fashioning a way of life that has become a symbol to all mankind."--
public comment during the official opening of the museum in 1951

"The story of Winterthur tells the greatest story of our time--the story of the American people."

"In these surroundings, so intimately connected with the lives of our forefathers, we see fine craftsmanship and soundness of workmanship; we see the economic and cultural development of our country, and in addition the symbols through which the founders of our Republic expressed their patriotism and love of country."

"Years after all the books on the Museum have been written I feel that the training and education of these young people at Winterthur will make the museum a living force through the ages."--*writing about the WPEAC program*

"My purpose in leaving Winterthur as a Museum to the public is to afford all those interested an opportunity to view and to study the conditions surrounding the early American home life."-- *Letters and Notes to Executors and Winterthur Directors*

"It seemed to me that early American arts and crafts had not been given the recognition they deserved.... I hoped, therefore, that, by preserving under one roof examples of architecture, furniture, and widely divergent early American materials of all kinds, interest in this field would be stimulated and that the magnificent contribution of our past would be helped to come into its own."

General Information

The National Gallery of Art and its Sculpture Garden, located on the National Mall between 3rd and 9th Streets at Constitution Ave. NW, are open Monday through Saturday from 10:00 a.m. to 5:00 p.m.

and Sunday from 11:00 a.m. to 6:00 p.m. The Gallery is closed on December 25 and January 1. For information call (202) 737-4215 or the Telecommunications Device for the Deaf (TDD) at (202) 842-6176, or visit the Gallery's Web site at www.nga.gov.

Visitors will be asked to present all carried items for inspection upon entering. Checkrooms are free of charge and located at each entrance. Luggage and other oversized bags must be presented at the Fourth Street Entrance of the East or West Building to permit X-ray screening and must be deposited in the checkrooms at those entrances. Any items larger than 17 X 26 inches cannot be accepted by the Gallery or its checkrooms. For the safety of the art work and visitors, nothing may be carried into the Gallery on a visitor's back. Any bag or other items that cannot be carried reasonably and safely in some other manner must be left at the checkrooms.

For additional press information please call or send inquiries to:

Press Office
National Gallery of Art
2000B South Club Drive
Landover, MD 20785
phone: (202) 842-6353 e-mail: pressinfo@nga.gov

Deborah Ziska
Chief of Press and Public Information
(202) 842-6353
ds-ziska@nga.gov

If you are a member of the press and would like to be added to our press list, [click here](#).

Web Site Newsletter

To subscribe to the National Gallery of Art's monthly Web site e-mail newsletter, please fill out the [newsletter subscription form](#). Every month you will receive a list of several items that are new on our site. To edit your subscriber information, please go to the [subscription management page](#).

National Gallery of Art, Press Office

[home](#) | [general information](#) | [exhibitions](#) | [image lists](#) | [recent announcements](#)

[press archives](#) | [contact us](#) | [nga.gov](#)

Copyright ©2005 National Gallery of Art, Washington, DC

National Gallery of Art

PRESS OFFICE

GENERAL INFORMATION • EXHIBITIONS • IMAGE LISTS • RECENT ANNOUNCEMENTS • PRESS ARCHIVES • CONTACT US

Online Press Kit

[News Release](#)[Checklist \(PDF 60k\)](#)[Online Resources](#)[Winterthur Chronology](#)**Biography of Henry Francis du Pont**[Quotes from Henry Francis du Pont](#)[Selections from the Exhibition](#)[Guest Curator's Biography](#)[Sponsor Statement \(PDF 48k\)](#)*For Press Inquiries Only:*

Lisa Knapp, Publicist

(202) 842-6804

l-knapp@nga.gov**BIOGRAPHY: HENRY FRANCIS DU PONT, 1880-1969**

Henry Francis du Pont, the only son of Henry Algernon and Pauline du Pont, was born at Winterthur in 1880, and in his own words, "always loved everything connected with it." A scion of Delaware's industrialist Du Pont family, he entered New England's Groton School in 1893, and then attended Harvard from 1899 to 1903. In 1901 he began taking courses at Bussey Institution, Harvard's college of practical agriculture and horticulture, and took his first trip abroad.

In 1906 Du Pont's father was elected to the United States Senate. Soon afterwards, he ceded responsibility of supervising the garden at Winterthur to his son. One of the first areas that Henry Francis created was the March Bank. He also developed and improved the formal garden areas east of the house. During these years before World War I, Du Pont traveled extensively to study the great gardens of Europe, especially those in England.

Henry Francis du Pont married Ruth Wales in 1916. Shortly afterwards, he became interested in American antiques and began amassing his renowned collection of early American decorative arts. He continued to develop Winterthur's farmland, raised a prizewinning herd of Holstein-Friesian cows, and worked with landscape architect Marian Cruger Coffin to blend the garden into the rural landscape. By 1925 Winterthur consisted of turkey, chicken, sheep, pig, and dairy farms, vegetable and flower gardens, greenhouses, a sawmill, a railroad station, and a post office.

Between 1928 and 1932 Du Pont doubled the size of the existing house at Winterthur and converted his home to a showplace for his collections. Throughout the next two decades Du Pont and his family lived in a museum-in-progress. His two daughters grew up with the sounds and sights of construction, surrounded by beautiful, breakable objects. In 1951, Du Pont turned his home over to the

Winterthur Corporation, a non-profit educational institution, and moved into a smaller home on the estate as the Henry Francis du Pont Winterthur Museum opened to the public.

In 1960, First Lady Jacqueline Kennedy visited Winterthur and invited Du Pont to head the Fine Arts Committee that oversaw the restoration of the White House. Until his death in 1969, Du Pont divided his time between his homes at Winterthur; Southampton, Long Island; Boca Grande, Florida; and an apartment in New York City.

General Information

The National Gallery of Art and its Sculpture Garden, located on the National Mall between 3rd and 9th Streets at Constitution Ave. NW, are open Monday through Saturday from 10:00 a.m. to 5:00 p.m. and Sunday from 11:00 a.m. to 6:00 p.m. The Gallery is closed on December 25 and January 1. For information call (202) 737-4215 or the Telecommunications Device for the Deaf (TDD) at (202) 842-6176, or visit the Gallery's Web site at www.nga.gov.

Visitors will be asked to present all carried items for inspection upon entering. Checkrooms are free of charge and located at each entrance. Luggage and other oversized bags must be presented at the Fourth Street Entrance of the East or West Building to permit X-ray screening and must be deposited in the checkrooms at those entrances. Any items larger than 17 X 26 inches cannot be accepted by the Gallery or its checkrooms. For the safety of the art work and visitors, nothing may be carried into the Gallery on a visitor's back. Any bag or other items that cannot be carried reasonably and safely in some other manner must be left at the checkrooms.

For additional press information please call or send inquiries to:

Press Office
National Gallery of Art
2000B South Club Drive

Landover, MD 20785

phone: (202) 842-6353 e-mail: pressinfo@nga.gov

Deborah Ziska

Chief of Press and Public Information

(202) 842-6353

ds-ziska@nga.gov

If you are a member of the press and would like to be added to our press list, [click here](#).

Web Site Newsletter


To subscribe to the National Gallery of Art's monthly Web site e-mail newsletter, please fill out the [newsletter subscription form](#). Every month you will receive a list of several items that are new on our site. To edit your subscriber information, please go to the [subscription management page](#).

National Gallery of Art, Press Office

[home](#) | [general information](#) | [exhibitions](#) | [image lists](#) | [recent announcements](#)

[press archives](#) | [contact us](#) | [nga.gov](#)

Copyright ©2005 National Gallery of Art, Washington, DC



National Gallery of Art

PRESS OFFICE

GENERAL INFORMATION • EXHIBITIONS • IMAGE LISTS • RECENT ANNOUNCEMENTS • PRESS ARCHIVES • CONTACT US

Online Press Kit

[News Release](#)

[Checklist \(PDF 60k\)](#)

[Online Resources](#)

[Winterthur Chronology](#)

[Biography of Henry
Francis du Pont](#)

[Quotes from Henry
Francis du Pont](#)

[Selections from the
Exhibition](#)

**Guest Curator's
Biography**

[Sponsor Statement \(PDF
48k\)](#)

For Press Inquiries Only:

Lisa Knapp, Publicist
(202) 842-6804

l-knapp@nga.gov

CURATOR'S BIOGRAPHY: WENDY A. COOPER LOIS F. AND HENRY S. MCNEIL SENIOR CURATOR OF FURNITURE WINTERTHUR MUSEUM

Serving as curator of furniture at the Winterthur Museum since 1995, Wendy A. Cooper became the Lois F. and Henry S. McNeil Senior Curator of Furniture in 1999. Prior to joining Winterthur, Cooper was curator of decorative arts at the Baltimore Museum of Art from 1987 to 1995. A graduate of Brown University (B.A., 1967, cum laude) and the Winterthur Program in Early American Culture, University of Delaware (M.A., 1971), she has worked at the Brooklyn Museum, the Museum of Fine Arts, Boston, and the Colonial Williamsburg Foundation. While at the Baltimore Museum of Art, she curated the major traveling exhibition *Classical Taste in America, 1800-1840*, and wrote the accompanying book of the same title, which was published by Abbeville Press. She has also worked with the National Gallery of Art, Washington, as guest curator on two exhibitions, *In Praise of America: American Decorative Arts 1640-1840* and *The Kaufman Collection of American Furniture*. She is presently working on another exhibition and publication for the National Gallery entitled *An American Vision: Henry Francis du Pont's Winterthur Museum*, which opens May 5, 2002.

General Information

The National Gallery of Art and its Sculpture Garden, located on the National Mall between 3rd and 9th Streets at Constitution Ave. NW, are open Monday through Saturday from 10:00 a.m. to 5:00 p.m. and Sunday from 11:00 a.m. to 6:00 p.m. The Gallery is closed on

December 25 and January 1. For information call (202) 737-4215 or the Telecommunications Device for the Deaf (TDD) at (202) 842-6176, or visit the Gallery's Web site at www.nga.gov.

Visitors will be asked to present all carried items for inspection upon entering. Checkrooms are free of charge and located at each entrance. Luggage and other oversized bags must be presented at the Fourth Street Entrance of the East or West Building to permit X-ray screening and must be deposited in the checkrooms at those entrances. Any items larger than 17 X 26 inches cannot be accepted by the Gallery or its checkrooms. For the safety of the art work and visitors, nothing may be carried into the Gallery on a visitor's back. Any bag or other items that cannot be carried reasonably and safely in some other manner must be left at the checkrooms.

For additional press information please call or send inquiries to:

Press Office
National Gallery of Art
2000B South Club Drive
Landover, MD 20785
phone: (202) 842-6353 e-mail: pressinfo@nga.gov

Deborah Ziska
Chief of Press and Public Information
(202) 842-6353
ds-ziska@nga.gov

If you are a member of the press and would like to be added to our press list, [click here](#).

Web Site Newsletter

To subscribe to the National Gallery of Art's monthly Web site e-mail newsletter, please fill out the [newsletter subscription form](#). Every month you will receive a list of several items that are new on our site. To edit your subscriber information, please go to the [subscription management page](#).

National Gallery of Art, Press Office

[home](#) | [general information](#) | [exhibitions](#) | [image lists](#) | [recent announcements](#)

[press archives](#) | [contact us](#) | [nga.gov](#)

Copyright ©2005 National Gallery of Art, Washington, DC